

Madison, Wisconsin

CITY OF MADISON

CITY ENGINEERING DIVISION

DEPARTMENT OF PUBLIC WORKS

PLAN OF PROPOSED IMPROVEMENT

RESURFACING 2020

INDEX OF SHEETS

SHEET NO. EC-1 - EC-8	EROSION CONTROL
SHEET NO. U-1 - U-3	UTILITY PLAN & PROFILE - LIEN RD
SHEET NO. U-4 - U-5	UTILITY PLAN & PROFILE - ELLEN AVE
SHEET NO. U-6 - U-7	UTILITY PLAN & PROFILE - INDEPENDENCE LN
SHEET NO. U-8 - U-9	UTILITY PLAN & PROFILE - S BROOKS ST
SHEET NO. U-10 - U-12	UTILITY PLAN & PROFILE - DAVENPORT DR & HATHAWAY DR
SHEET NO. U-13 - U-14	UTILITY PLAN & PROFILE - PORTLAND PKWY

CITY PROJECT NO. 12691
CONTRACT NO. 8490

PUBLIC IMPROVEMENT PROJECT
APPROVED

DECEMBER 3, 2019

BY THE COMMON COUNCIL
OF MADISON, WISCONSIN

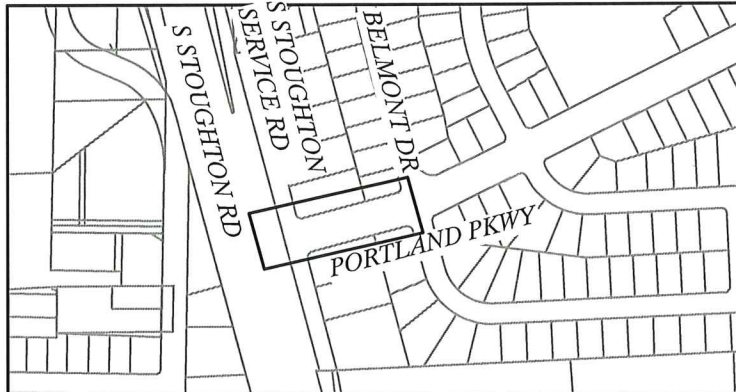
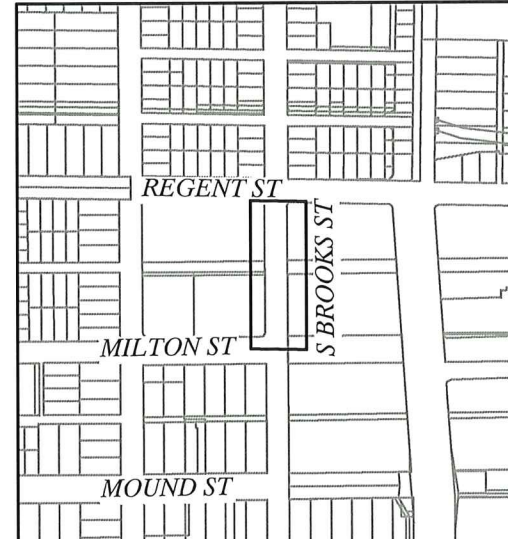
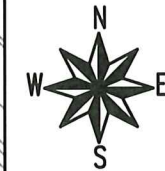
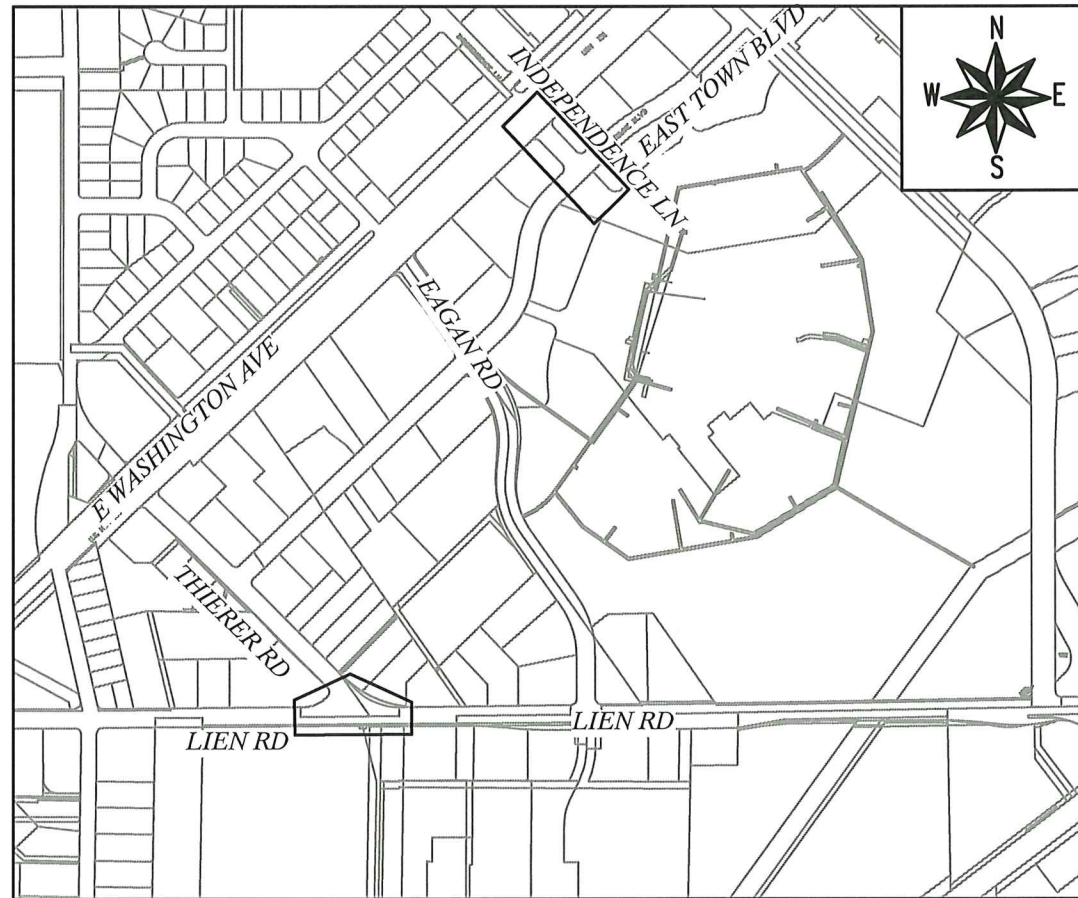
PUBLIC IMPROVEMENT DESIGN
APPROVED BY:

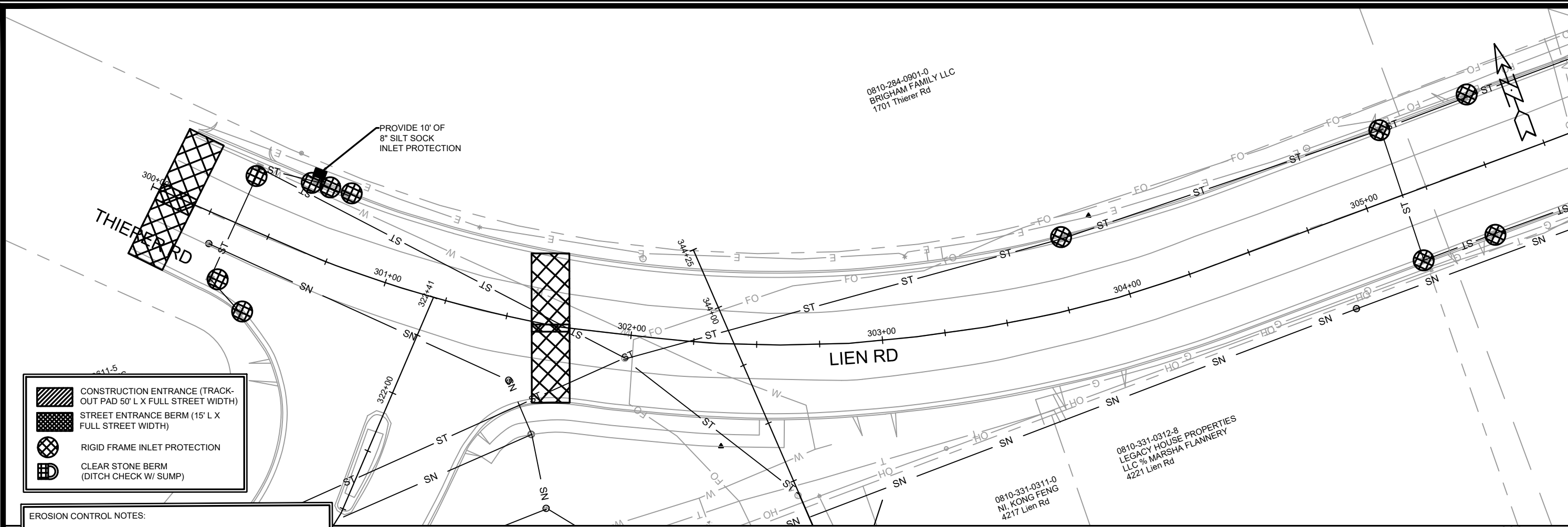
 2/7/20
City Engineer Date

STORM SEWER
DESIGNED BY:



PLOT SCALE: 1"=100' REV. DATE: 2/5/2020 1:58 PM ORIGINATOR: CITY_OF_MADISON





	CONSTRUCTION ENTRANCE (TRACK-OUT PAD 50' L X FULL STREET WIDTH)
	STREET ENTRANCE BERM (15' L X FULL STREET WIDTH)
	RIGID FRAME INLET PROTECTION
	CLEAR STONE BERM (DITCH CHECK W/ SUMP)

EROSION CONTROL NOTES:

EROSION CONTROL MEASURES SHALL BE IN PLACE PRIOR TO ANY OTHER CONSTRUCTION ACTIVITY.

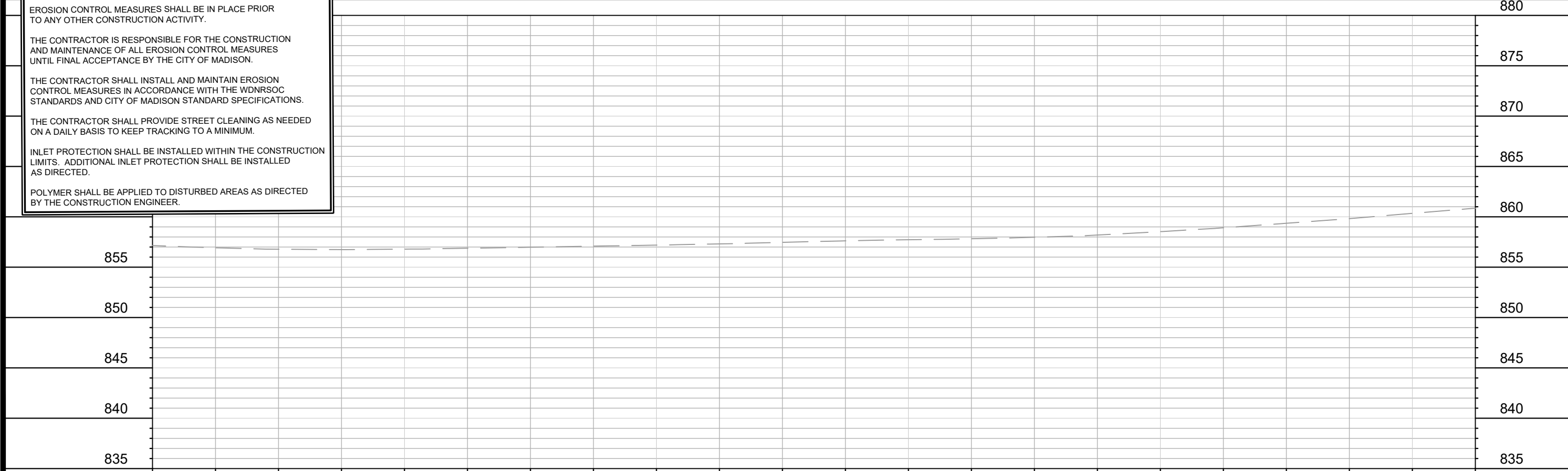
THE CONTRACTOR IS RESPONSIBLE FOR THE CONSTRUCTION AND MAINTENANCE OF ALL EROSION CONTROL MEASURES UNTIL FINAL ACCEPTANCE BY THE CITY OF MADISON.

THE CONTRACTOR SHALL INSTALL AND MAINTAIN EROSION CONTROL MEASURES IN ACCORDANCE WITH THE WDNR SOC STANDARDS AND CITY OF MADISON STANDARD SPECIFICATIONS.

THE CONTRACTOR SHALL PROVIDE STREET CLEANING AS NEEDED ON A DAILY BASIS TO KEEP TRACKING TO A MINIMUM.

INLET PROTECTION SHALL BE INSTALLED WITHIN THE CONSTRUCTION LIMITS. ADDITIONAL INLET PROTECTION SHALL BE INSTALLED AS DIRECTED.

POLYMER SHALL BE APPLIED TO DISTURBED AREAS AS DIRECTED BY THE CONSTRUCTION ENGINEER.

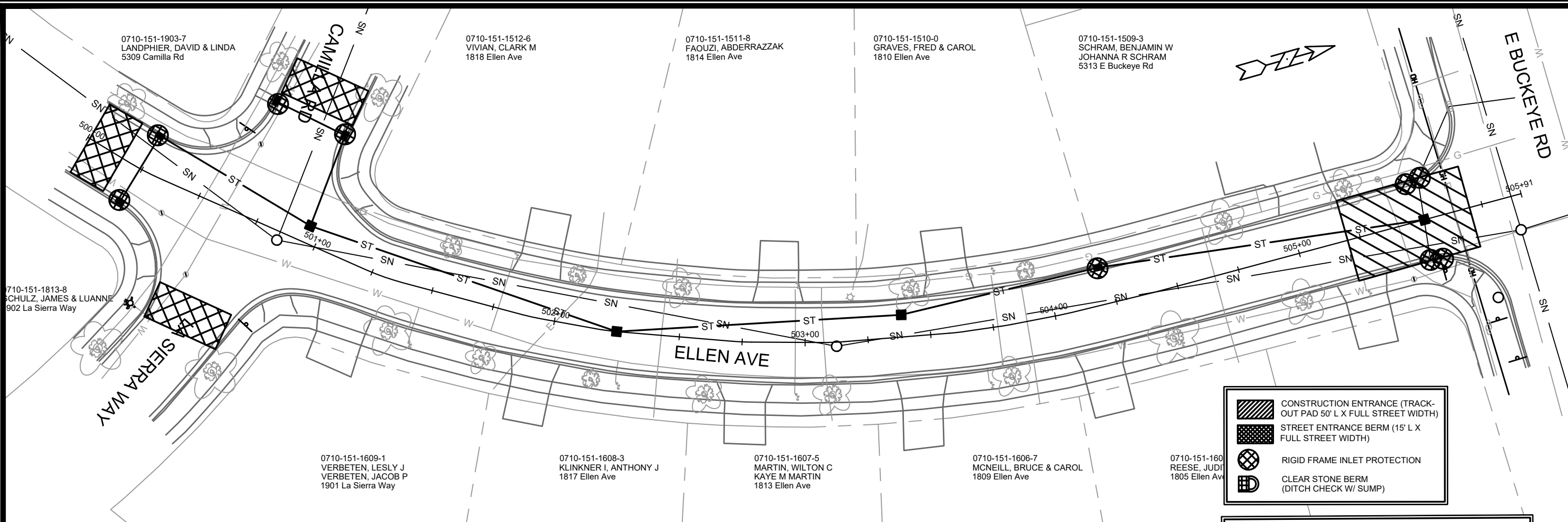


0810-284-0901-0
BRIGHAM FAMILY LLC
1701 Thierer Rd

0810-331-0312-8
LEGACY HOUSE PROPERTIES
LLC % MARSHA FLANNERY
4221 Lien Rd

0810-331-0311-0
NI, KONG FENG
4217 Lien Rd

MARK	REVISION	DATE	BY
12691		2/7/2020 11:36 AM	
12691			EC-1
12691			
CITY OF MADISON			
CONTRACT NO: 8490			
EROSION CONTROL - LIEN RD			
RESURFACING 2020			
M:\DESIGN\Projects\12691\CAD\Storm\12691EC_PnP.dwg			
12691			EC-1



	CONSTRUCTION ENTRANCE (TRACK-OUT PAD 50' L X FULL STREET WIDTH)
	STREET ENTRANCE BERM (15' L X FULL STREET WIDTH)
	RIGID FRAME INLET PROTECTION
	CLEAR STONE BERM (DITCH CHECK W/ SUMP)

EROSION CONTROL NOTES:

EROSION CONTROL MEASURES SHALL BE IN PLACE PRIOR TO ANY OTHER CONSTRUCTION ACTIVITY.

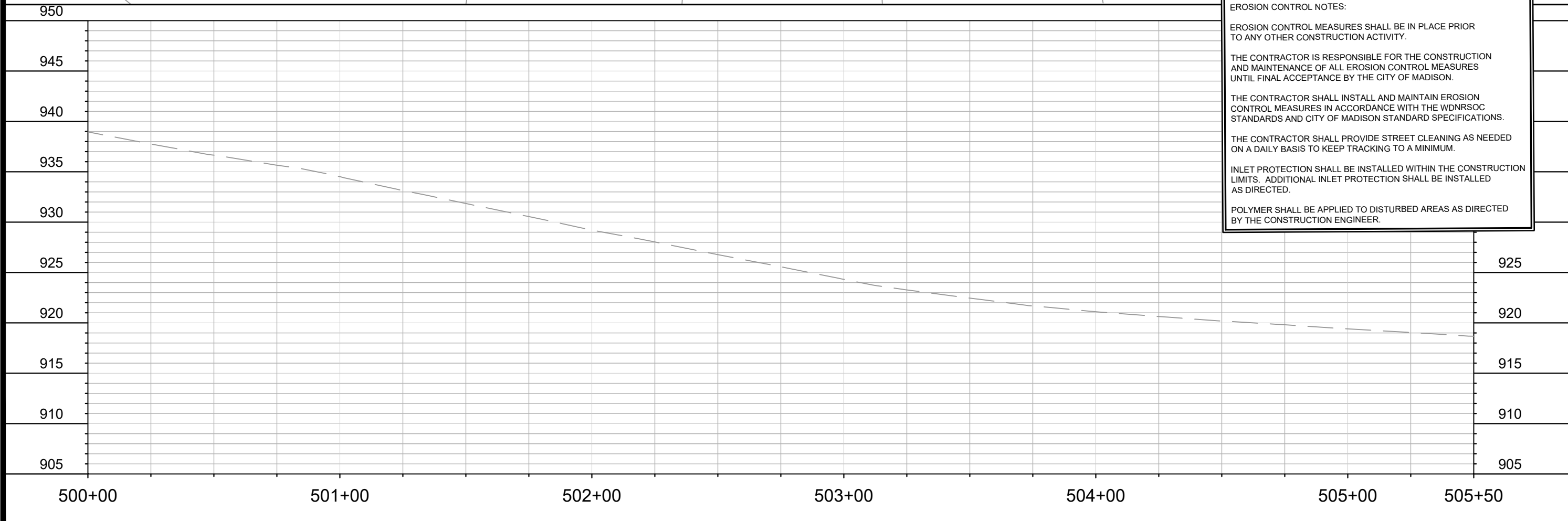
THE CONTRACTOR IS RESPONSIBLE FOR THE CONSTRUCTION AND MAINTENANCE OF ALL EROSION CONTROL MEASURES UNTIL FINAL ACCEPTANCE BY THE CITY OF MADISON.

THE CONTRACTOR SHALL INSTALL AND MAINTAIN EROSION CONTROL MEASURES IN ACCORDANCE WITH THE WDNRSOC STANDARDS AND CITY OF MADISON STANDARD SPECIFICATIONS.





THE CONTRACTOR SHALL PROVIDE STREET CLEANING AS NEEDED ON A DAILY BASIS TO KEEP TRACKING TO A MINIMUM.

INLET PROTECTION SHALL BE INSTALLED WITHIN THE CONSTRUCTION LIMITS. ADDITIONAL INLET PROTECTION SHALL BE INSTALLED AS DIRECTED.

POLYMER SHALL BE APPLIED TO DISTURBED AREAS AS DIRECTED BY THE CONSTRUCTION ENGINEER.



MARK	REVISION	DATE	BY
12691		2/7/2020 11:36 AM	
Designed By: DAC		Scale: 1" = 40'	
12691		EC-3	
12691		8490	
CITY OF MADISON		CONTRACT NO.:	
EROSION CONTROL - ELLEN AVE		RESURFACING 2020	
M:\DESIGN\Projects\12691\CAD\Storm\12691EC_PnP.dwg			
12691		12691	
EC-3		EC-3	

-  CONSTRUCTION ENTRANCE (TRACK-OUT PAD 50' L X FULL STREET WIDTH)
-  STREET ENTRANCE BERM (15' L X FULL STREET WIDTH)
-  RIGID FRAME INLET PROTECTION
-  CLEAR STONE BERM (DITCH CHECK W/ SUMP)

EROSION CONTROL NOTES:

EROSION CONTROL MEASURES SHALL BE IN PLACE PRIOR TO ANY OTHER CONSTRUCTION ACTIVITY.

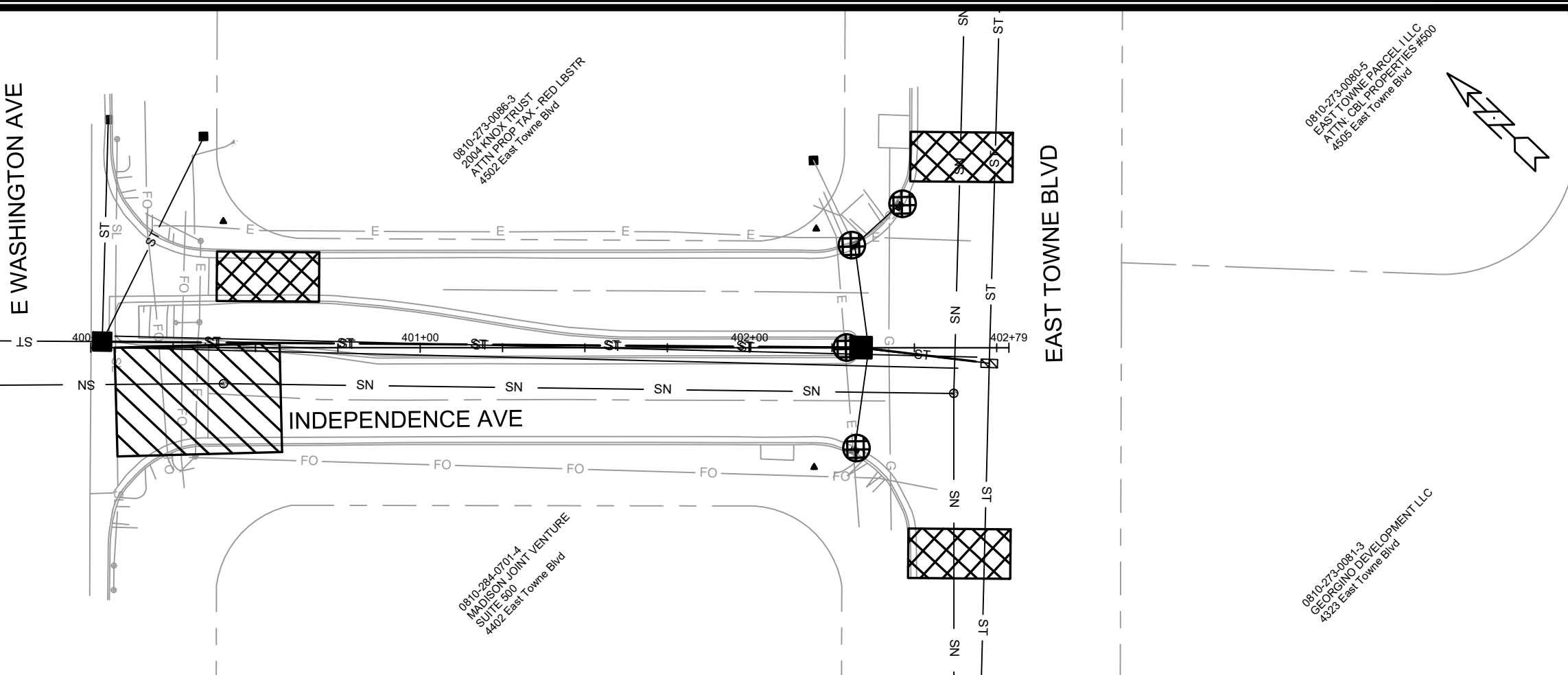
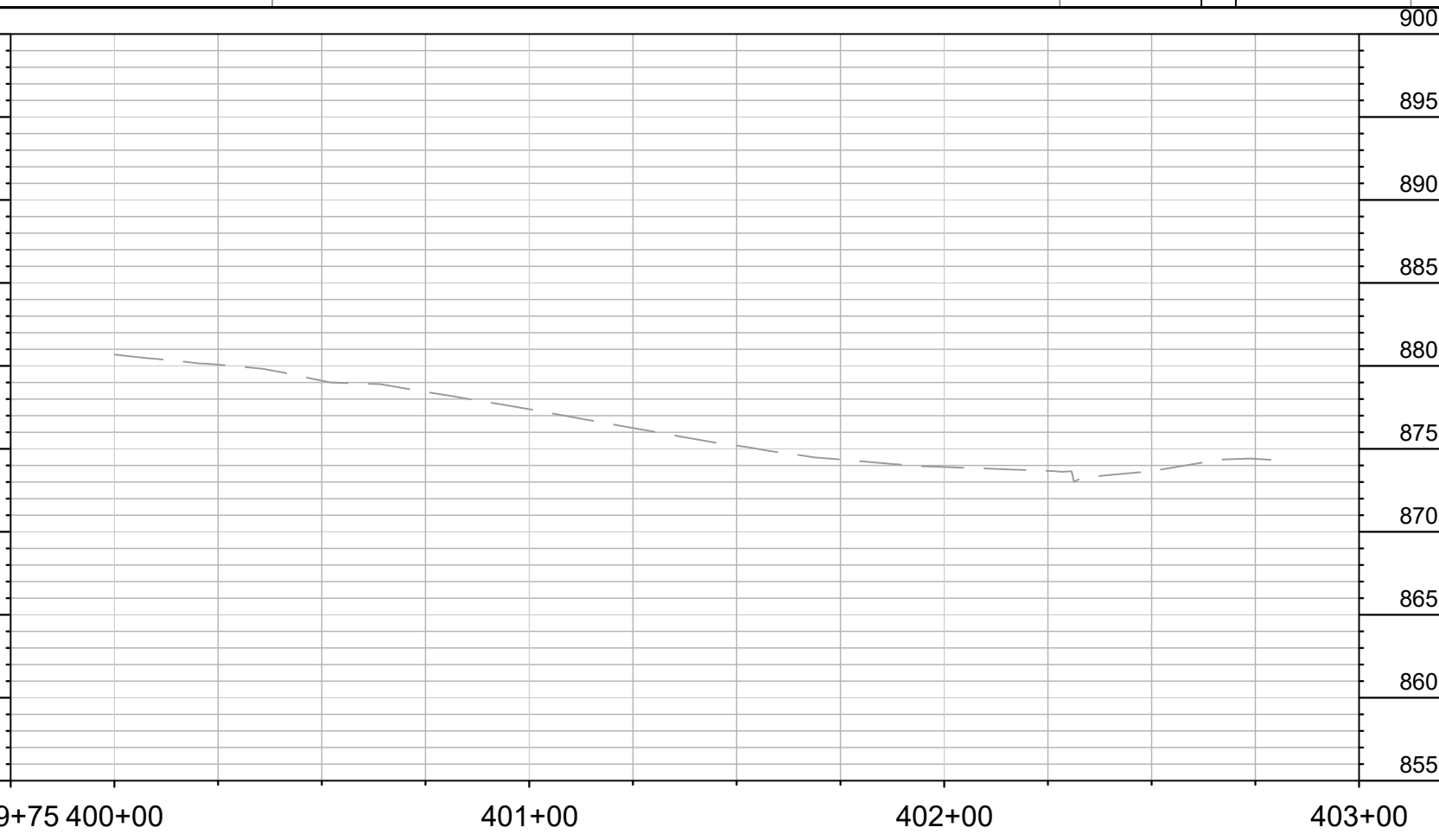
THE CONTRACTOR IS RESPONSIBLE FOR THE CONSTRUCTION AND MAINTENANCE OF ALL EROSION CONTROL MEASURES UNTIL FINAL ACCEPTANCE BY THE CITY OF MADISON.


THE CONTRACTOR SHALL INSTALL AND MAINTAIN EROSION CONTROL MEASURES IN ACCORDANCE WITH THE WDNR SOC STANDARDS AND CITY OF MADISON STANDARD SPECIFICATIONS.

THE CONTRACTOR SHALL PROVIDE STREET CLEANING AS NEEDED ON A DAILY BASIS TO KEEP TRACKING TO A MINIMUM.

INLET PROTECTION SHALL BE INSTALLED WITHIN THE CONSTRUCTION LIMITS. ADDITIONAL INLET PROTECTION SHALL BE INSTALLED AS DIRECTED.

POLYMER SHALL BE APPLIED TO DISTURBED AREAS AS DIRECTED BY THE CONSTRUCTION ENGINEER.



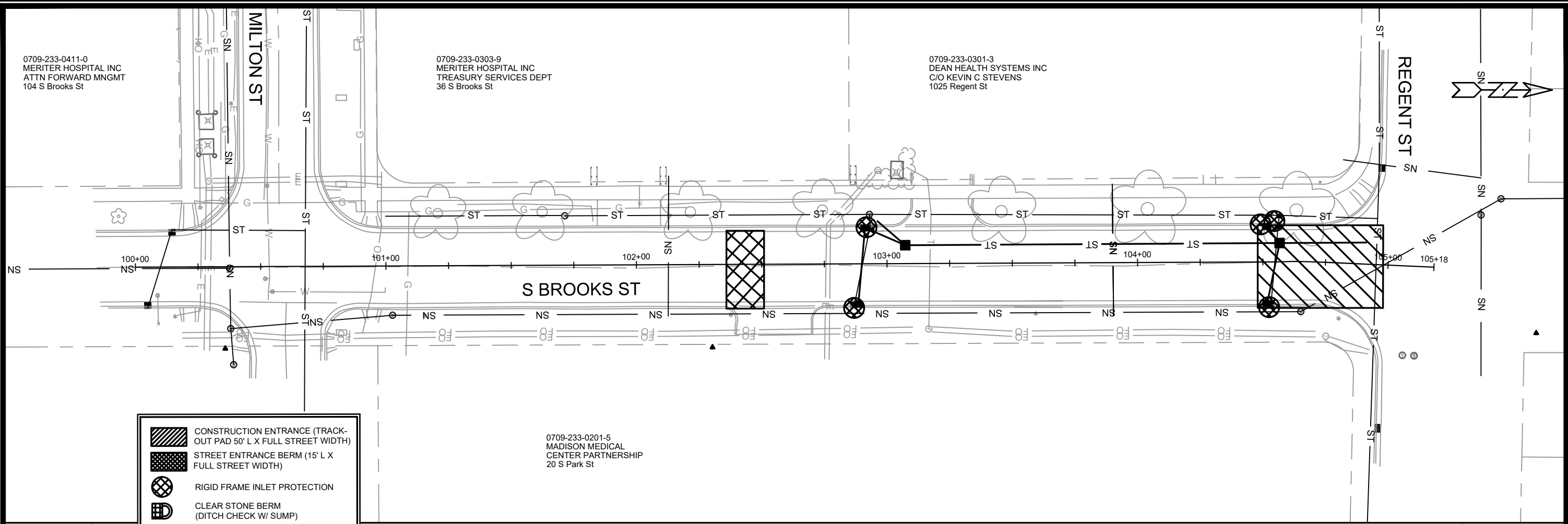
	12691	CITY OF MADISON	CONTRACT NO: 8490	EC-4
EROSION CONTROL - INDEPENDENCE LN				
RESURFACING 2020				
M:\DESIGN\Projects\12691\CAD\Storm\12691EC_PnP.dwg				
				
12691				
EC-4				

0709-233-0411-0
MERITER HOSPITAL INC
ATTN FORWARD MNGMT
104 S Brooks St

0709-233-0303-9
MERITER HOSPITAL INC
TREASURY SERVICES DEPT
36 S Brooks St

0709-233-0301-3
DEAN HEALTH SYSTEMS INC
C/O KEVIN C STEVENS
1025 Regent St

0709-233-0201-5
MADISON MEDICAL
CENTER PARTNERSHIP
20 S Park St



	CONSTRUCTION ENTRANCE (TRACK-OUT PAD 50' L X FULL STREET WIDTH)
	STREET ENTRANCE BERM (15' L X FULL STREET WIDTH)
	RIGID FRAME INLET PROTECTION
	CLEAR STONE BERM (DITCH CHECK W/ SUMP)

EROSION CONTROL NOTES:

EROSION CONTROL MEASURES SHALL BE IN PLACE PRIOR TO ANY OTHER CONSTRUCTION ACTIVITY.

THE CONTRACTOR IS RESPONSIBLE FOR THE CONSTRUCTION AND MAINTENANCE OF ALL EROSION CONTROL MEASURES UNTIL FINAL ACCEPTANCE BY THE CITY OF MADISON.

THE CONTRACTOR SHALL INSTALL AND MAINTAIN EROSION CONTROL MEASURES IN ACCORDANCE WITH THE WDNR SOC STANDARDS AND CITY OF MADISON STANDARD SPECIFICATIONS.

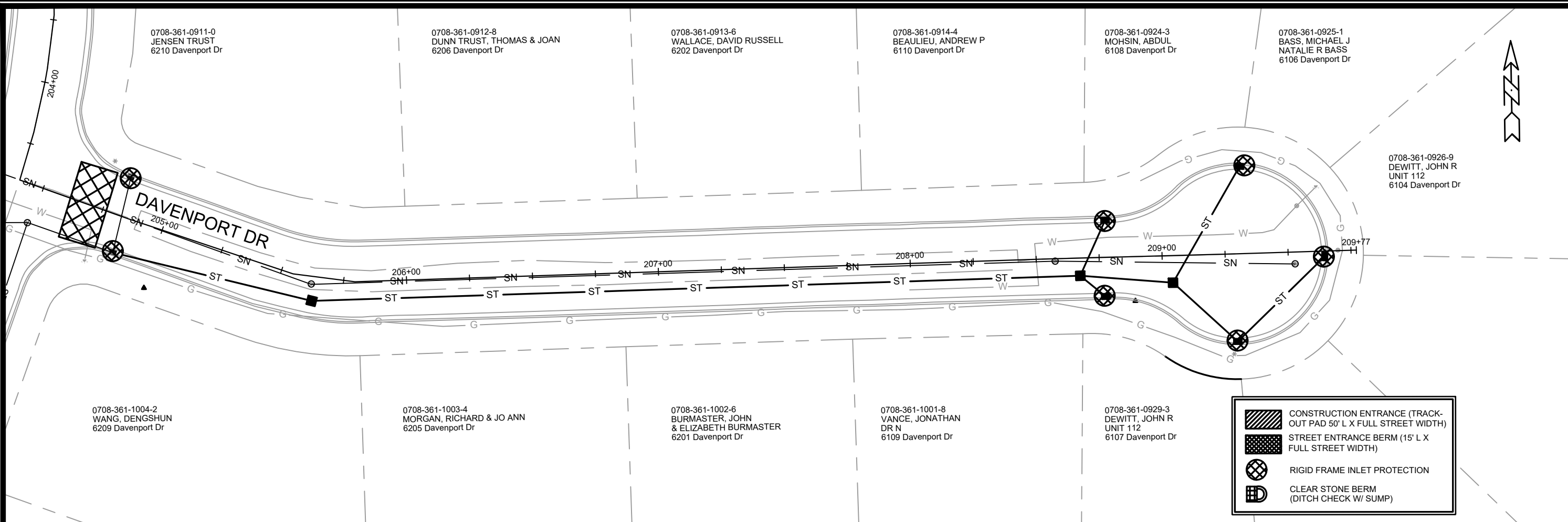
THE CONTRACTOR SHALL PROVIDE STREET CLEANING AS NEEDED ON A DAILY BASIS TO KEEP TRACKING TO A MINIMUM.

INLET PROTECTION SHALL BE INSTALLED WITHIN THE CONSTRUCTION LIMITS. ADDITIONAL INLET PROTECTION SHALL BE INSTALLED AS DIRECTED.

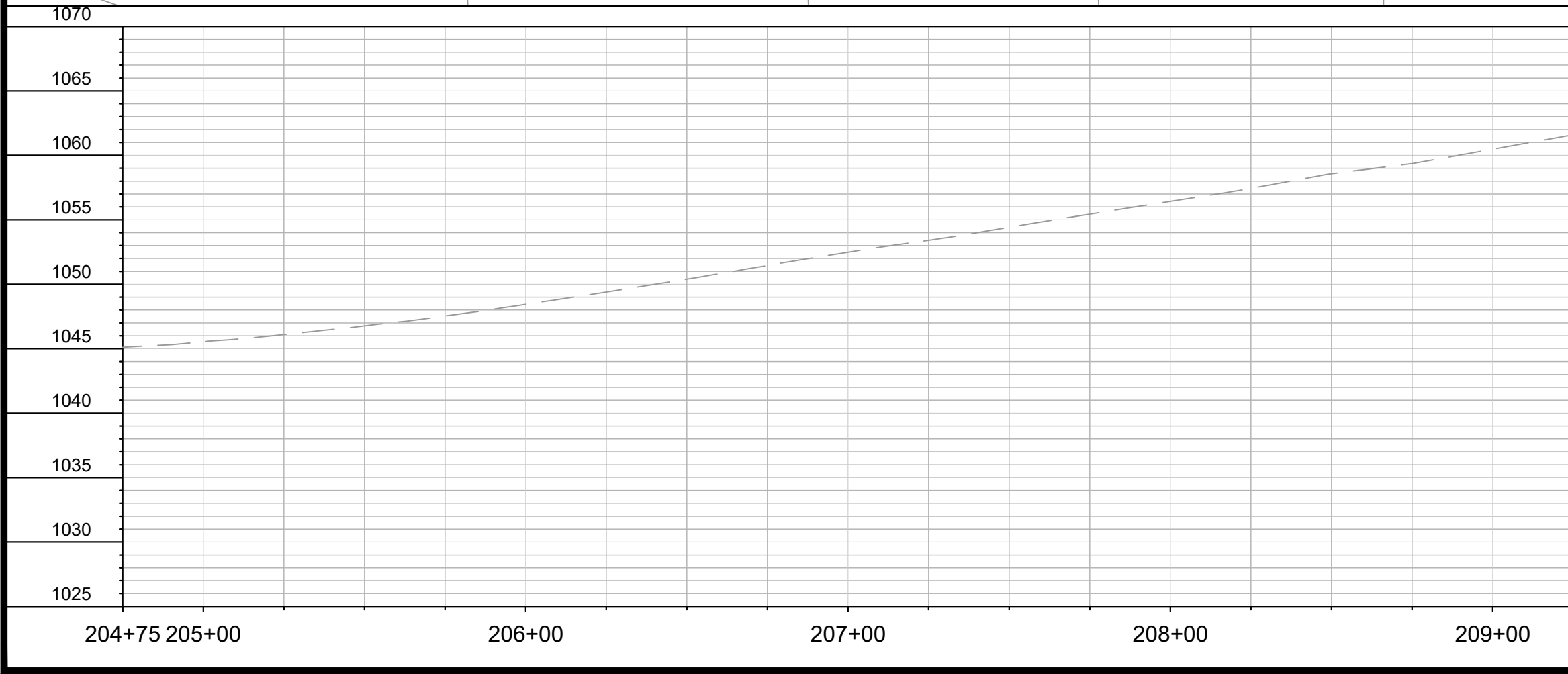
POLYMER SHALL BE APPLIED TO DISTURBED AREAS AS DIRECTED BY THE CONSTRUCTION ENGINEER.

875		875
870		870
865		865
860		860
855		855
850		850
845		845
840		840
835		835
830		830
100+00	101+00	102+00
		103+00
		104+00
		105+00
		005+18

12691	12691	8490	EC-5
CITY OF MADISON		CONTRACT NO:	
EROSION CONTROL - S BROOKS ST		RESURFACING 2020	
12691		12691	
EC-5		EC-5	



	CONSTRUCTION ENTRANCE (TRACK-OUT PAD 50' L X FULL STREET WIDTH)
	STREET ENTRANCE BERM (15' L X FULL STREET WIDTH)
	RIGID FRAME INLET PROTECTION
	CLEAR STONE BERM (DITCH CHECK W/ SUMP)



EROSION CONTROL NOTES:

EROSION CONTROL MEASURES SHALL BE IN PLACE PRIOR TO ANY OTHER CONSTRUCTION ACTIVITY.

THE CONTRACTOR IS RESPONSIBLE FOR THE CONSTRUCTION AND MAINTENANCE OF ALL EROSION CONTROL MEASURES UNTIL FINAL ACCEPTANCE BY THE CITY OF MADISON.

THE CONTRACTOR SHALL INSTALL AND MAINTAIN EROSION CONTROL MEASURES IN ACCORDANCE WITH THE WDMRSOC STANDARDS AND CITY OF MADISON STANDARD SPECIFICATIONS.





THE CONTRACTOR SHALL PROVIDE STREET CLEANING AS NEEDED ON A DAILY BASIS TO KEEP TRACKING TO A MINIMUM.

INLET PROTECTION SHALL BE INSTALLED WITHIN THE CONSTRUCTION LIMITS. ADDITIONAL INLET PROTECTION SHALL BE INSTALLED AS DIRECTED.

POLYMER SHALL BE APPLIED TO DISTURBED AREAS AS DIRECTED BY THE CONSTRUCTION ENGINEER.

12691	12691	8490	EC-6
CITY OF MADISON		CONTRACT NO:	
EROSION CONTROL - DAVENPORT DR		RESURFACING 2020	
12691		12691	
EC-6		EC-6	

M:\DESIGN\Projects\12691\CAD\Storm\12691EC_PnP.dwg

-  CONSTRUCTION ENTRANCE (TRACK-OUT PAD 50' L X FULL STREET WIDTH)
-  STREET ENTRANCE BERM (15' L X FULL STREET WIDTH)
-  RIGID FRAME INLET PROTECTION
-  CLEAR STONE BERM (DITCH CHECK W/ SUMP)

EROSION CONTROL NOTES:

EROSION CONTROL MEASURES SHALL BE IN PLACE PRIOR TO ANY OTHER CONSTRUCTION ACTIVITY.

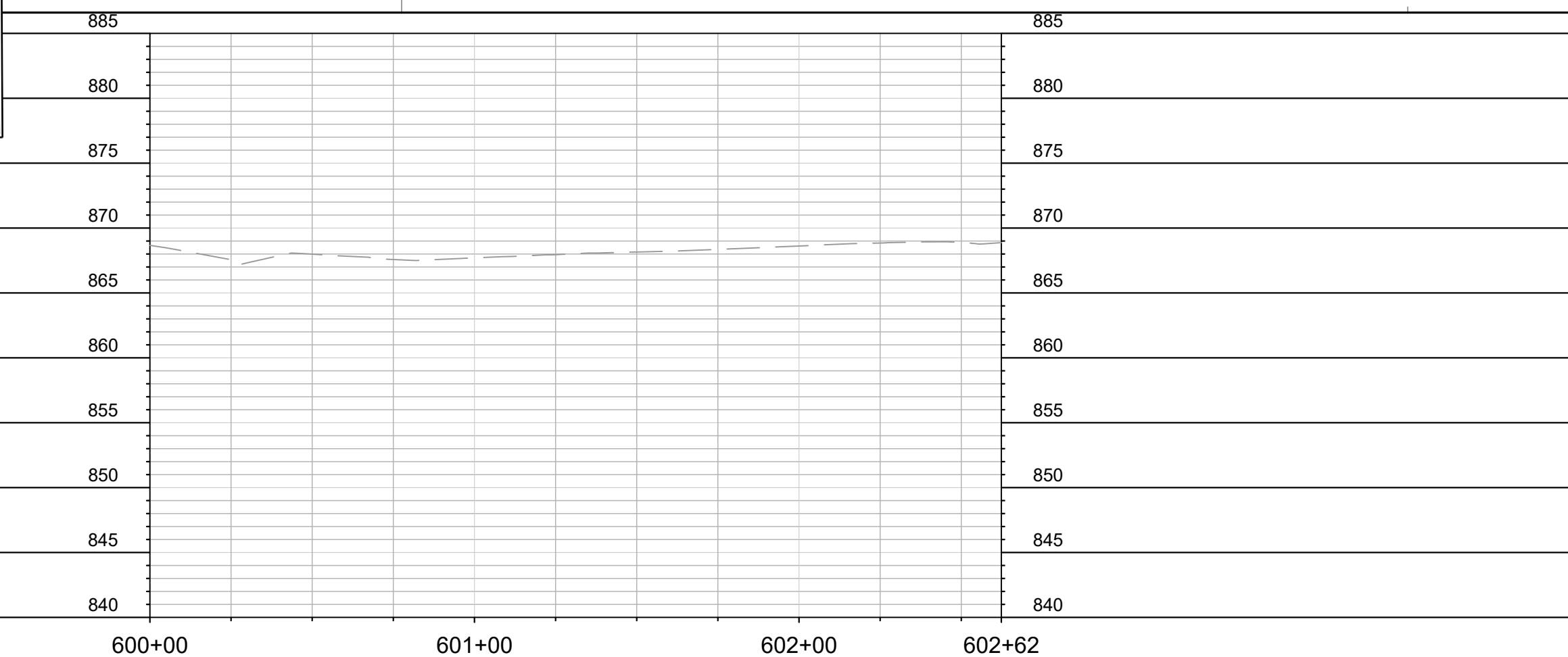
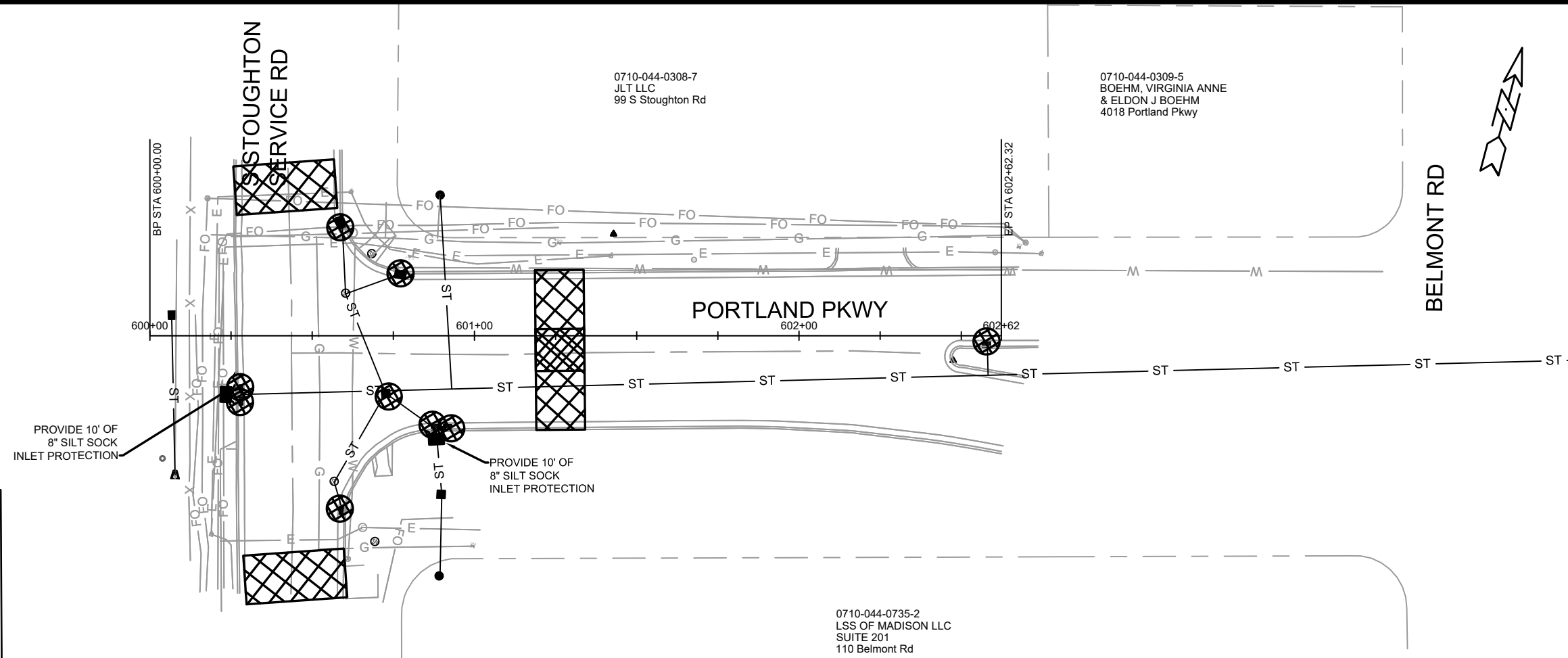
THE CONTRACTOR IS RESPONSIBLE FOR THE CONSTRUCTION AND MAINTENANCE OF ALL EROSION CONTROL MEASURES UNTIL FINAL ACCEPTANCE BY THE CITY OF MADISON.

THE CONTRACTOR SHALL INSTALL AND MAINTAIN EROSION CONTROL MEASURES IN ACCORDANCE WITH THE WDNR SOC STANDARDS AND CITY OF MADISON STANDARD SPECIFICATIONS.

THE CONTRACTOR SHALL PROVIDE STREET CLEANING AS NEEDED ON A DAILY BASIS TO KEEP TRACKING TO A MINIMUM.

INLET PROTECTION SHALL BE INSTALLED WITHIN THE CONSTRUCTION LIMITS. ADDITIONAL INLET PROTECTION SHALL BE INSTALLED AS DIRECTED.


POLYMER SHALL BE APPLIED TO DISTURBED AREAS AS DIRECTED BY THE CONSTRUCTION ENGINEER.

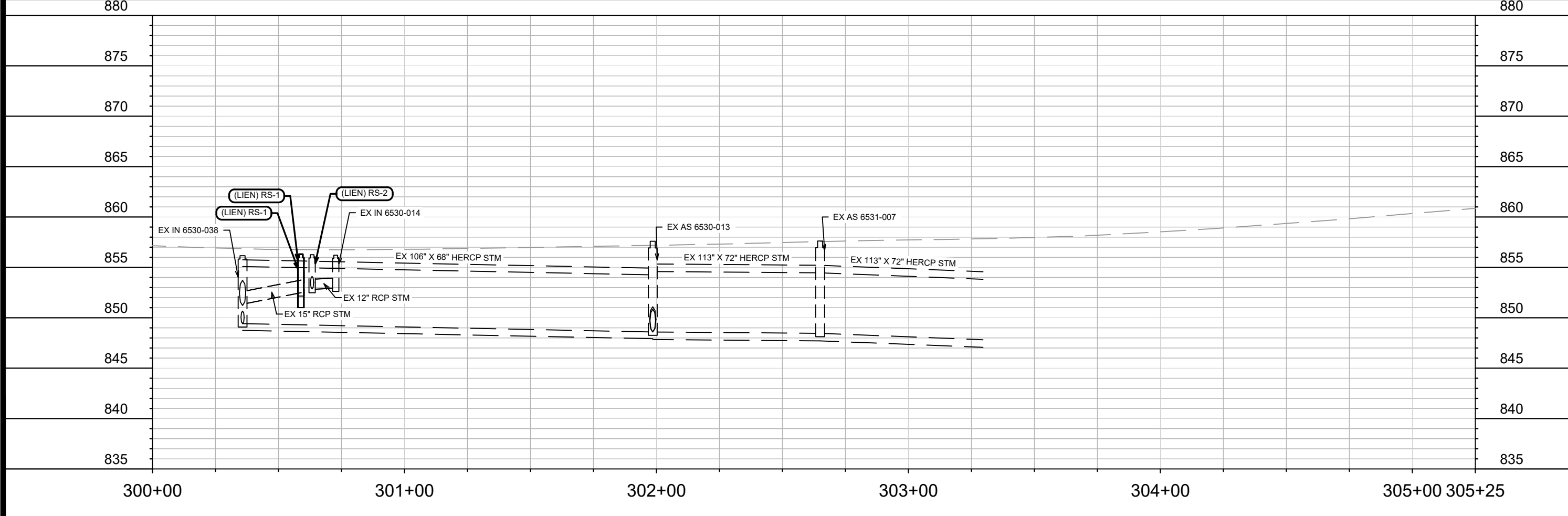
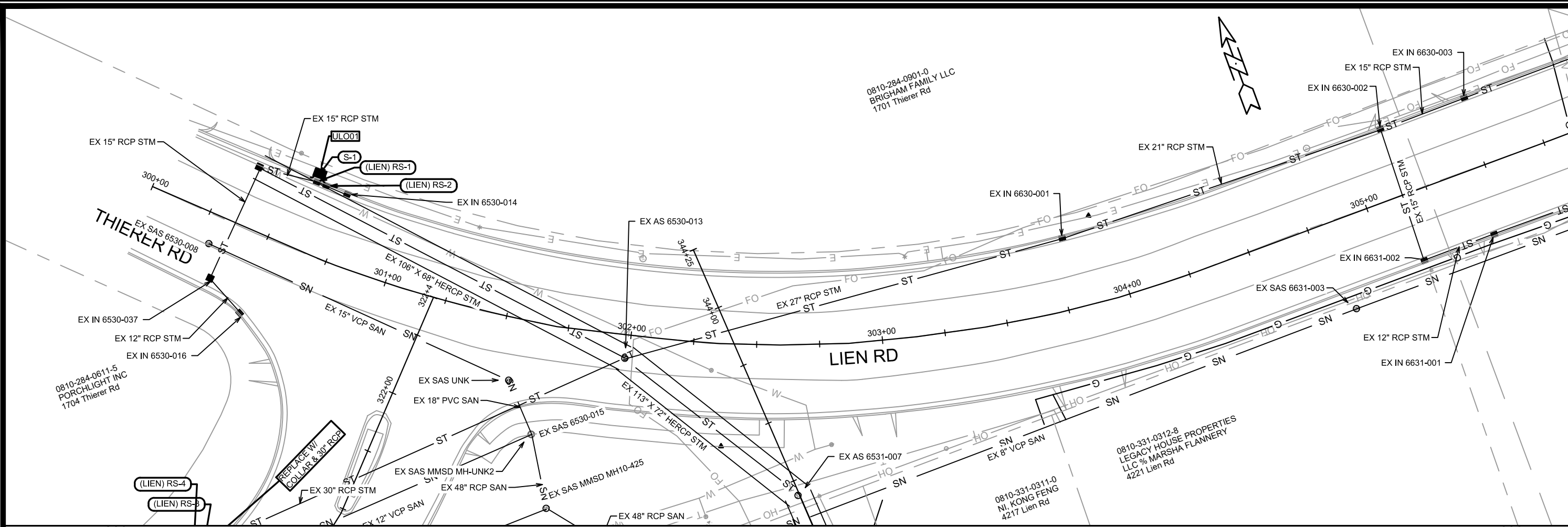


0710-044-0308-7
JLT LLC
99 S Stoughton Rd

0710-044-0309-5
BOEHM, VIRGINIA ANNE
& ELTON J BOEHM
4018 Portland Pkwy

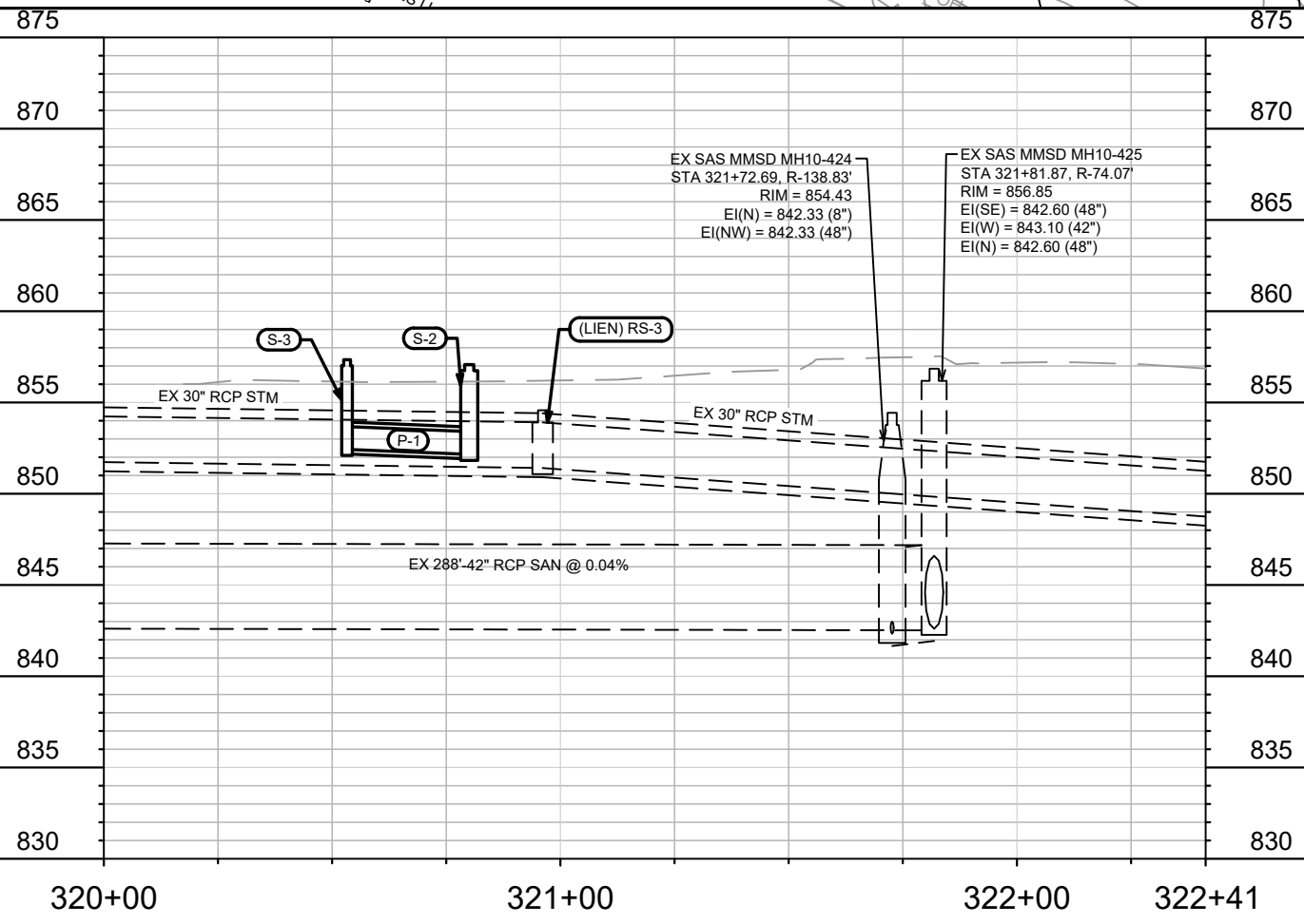
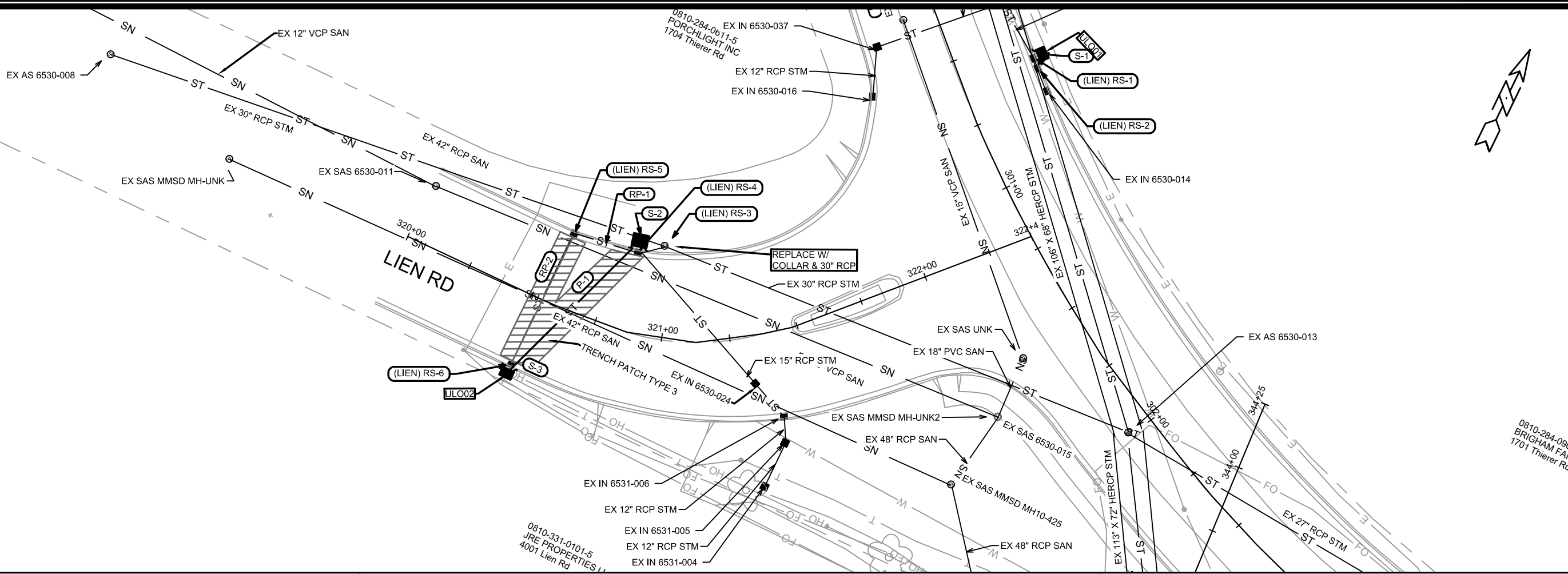
0710-044-0735-2
LSS OF MADISON LLC
SUITE 201
110 Belmont Rd

MARK	REVISION	DATE	BT	Scale: 1" = 40'
Designed By: DAO	Date:			
12691				EC-8
12691				
CITY OF MADISON				
EROSION CONTROL - PORTLAND PKWY				
RESURFACING 2020				
M:\DESIGN\Projects\12691\CAD\Storm\12691EC_PnP.dwg				
				
12691				
EC-8				
			8490	CONTRACT NO:



MARK	REVISION	DATE	BY
12691		27/2020 11:37 AM	U-1
12691		CITY OF MADISON	
12691		CONTRACT NO.: 8490	
UTILITIES PLAN & PROFILE - LIEN RD			
RESURFACING 2020			
M:\DESIGN\Projects\12691\CAD\Storm\12691STM-Pipe Network.dwg			
12691		U-1	





12691	U-2
CITY OF MADISON	8490
CONTRACT NO:	12691
UTILITIES PLAN & PROFILE - LIEN RD	
RESURFACING 2020	
M:\DESIGN\Projects\12691\CAD\Storm\12691STM-Pipe Network.dwg	
12691	U-2

STORM SEWER SCHEDULE

RESURFACING W/ STORM	SHEET NO.
PROJECT NO. 12691	U-3
STORM SEWER SCHEDULE	
LIEN RD	CITY OF MADISON

U-3

PROPOSED STORM STRUCTURES

STRUC. NO.	STATION	LOCATION (OFFSET)	TYPE	TOP OF CASTING	E.I.	DEPTH	NOTES
LIEN RD							
S-1	300+58.92	LT-31.18	TERRACE INLET TYPE 3	856.31	852.49	3.82	(1)
S-2	320+53.30	RT-29.75	TERRACE INLET TYPE 2	855.59	851.41	4.18	(1)(2)
S-3	320+80.06	LT-32.99	TERRACE INLET TYPE 3	855.65	852.43	3.22	(1)

REMOVE STORM STRUCTURES

STRUC. NO.	ID NO.	STATION	LOCATION (OFFSET)	TYPE	NOTES
(LIEN) RS-1	IN 6530-015A	300+59.07	LT-27.37	INLET	
(LIEN) RS-2	IN 6530-015B	300+63.28	LT-27.51	INLET	
(LIEN) RS-3	IN 6530-012	320+96.19	LT-33.14	SAS W/ INLET	
(LIEN) RS-4	IN 6530-011	320+80.89	LT-28.54	INLET	
(LIEN) RS-5	IN 6530-010	320+55.29	LT-26.48	INLET	
(LIEN) RS-6	IN 6531-003	320+53.39	RT-26.16	INLET	

STORM SEWER ULOs

ULO NO.	STATION	LOCATION (OFFSET)	TYPE	NOTES
ULO01	300+58.49	LT-33.06	ELEC	
ULO02	320+53.29	RT-30.66	TELE/FO	

SPECIFIC NOTES

- (1) TOP OF CASTING IS SET 0.2' BELOW TOP OF CURB AT SITE LOCATION
- (2) RECONNECT TO EX 30" RCP W/ COLLAR (PAID UNDER BID ITEMS 50499 & 50407)

PROPOSED STORM PIPES

PIPE NO.	FROM (DNSTM)	TO (UPSTM)	DISCH. E.I.	INLET E.I.	PLAN (PAY) LGTH (FT)	PIPE LGTH (FT)	SLOPE (%)	PIPE SIZE	TYPE	NOTES
LIEN RD										
P-1	S-2	S-3	852.16	852.43	67	64	0.42%	15"	RCP	-

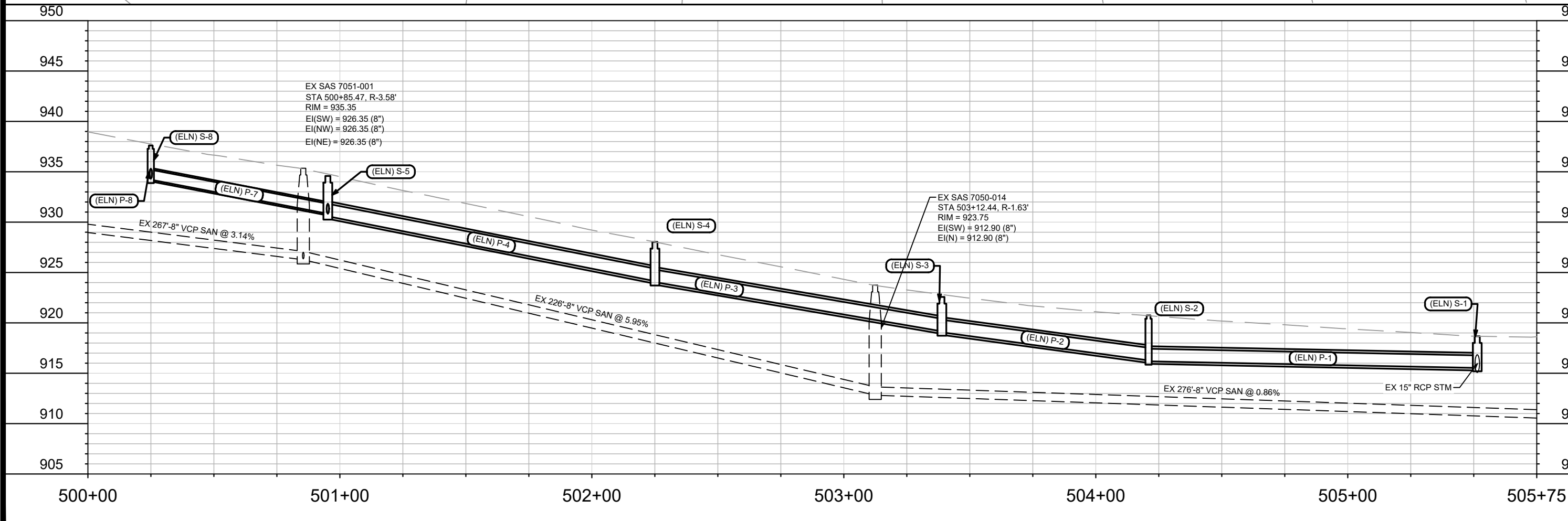
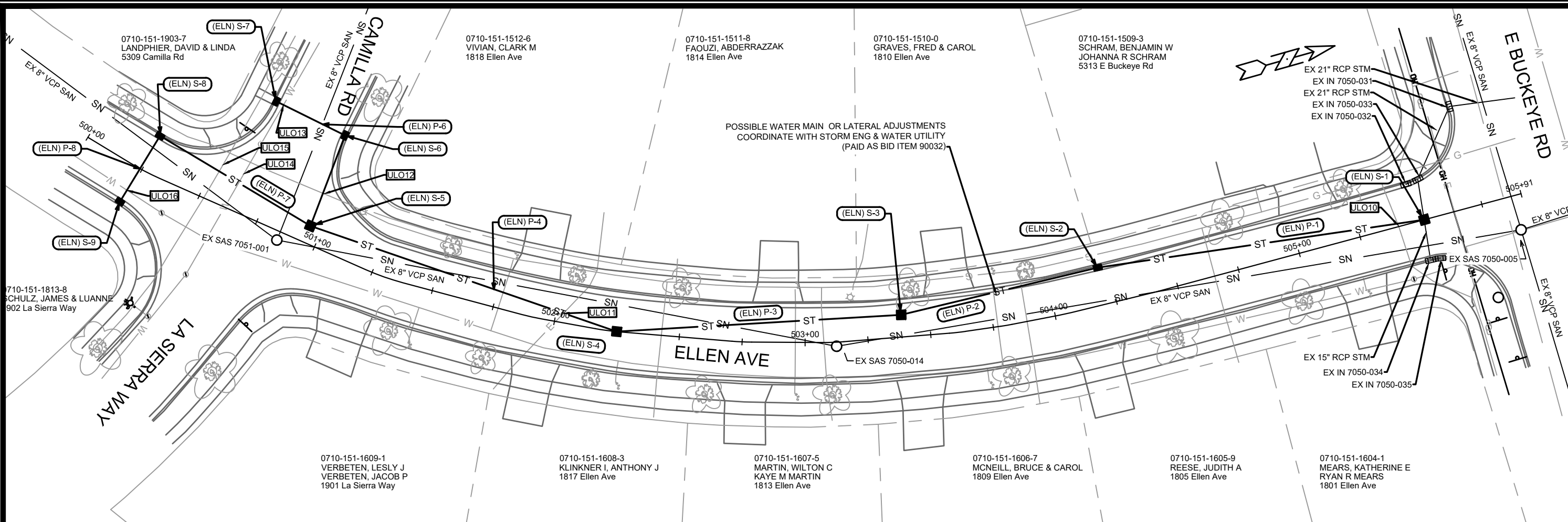
REMOVE STORM PIPES

REMOVE NO.	REMOVE FROM	REMOVE TO	LGTH (FT)	PIPE SIZE	PIPE TYPE	PAID (Y/N)	NOTES
RP-1	(LIEN) RS-3	IN 6530-010	23	15"	RCP	Y	
RP-2	IN 6530-010	IN 6531-003	52	12"	RCP	Y	

NOTE: PLAN LENGTH (PAY LENGTH) IS FROM CENTER OF STRUCTURE TO CENTER OF STRUCTURE. PIPE LENGTH IS ACTUAL LENGTH OF PIPE FROM STRUCTURE WALL TO STRUCTURE WALL. SLOPE CALCULATED USING PIPE LENGTH.

STANDARD NOTES:

- ABBREVIATIONS: AE = APRON ENDWALL; RCP = REINFORCED CONCRETE PIPE; HERCP = HORIZONTAL ELLIPTICAL REINFORCED CONCRETE PIPE; DNA = DOES NOT APPLY; SAS = SEWER ACCESS STRUCTURE; LP = LOW POINT INLET STRUCTURE; FP = FIELD POURED STRUCTURE; TR = TOP OF CONCRETE ROOF; NCM = NO CROWN MATCH FOR PIPES; UD = UNDERDRAIN
- APPROXIMATE DISCHARGE E.I. GIVEN, ADJUST E.I. AND PIPE SLOPE IN THE FIELD.
- TOP OF CASTING GRADE GIVEN IS THE TOP OF CURB FOR INLET STRUCTURES AND THE FLOWLINE OF THE CLOSED CASTING FOR SAS's.
- TOP OF CONCRETE ROOF (TR) IS 1.25' BELOW TOP OF CASTING UNLESS OTHERWISE NOTED.
- ALL REINFORCED CONCRETE PIPES TO BE CLASS III UNLESS OTHERWISE NOTED.
- SURVEYOR TO CONFIRM THAT ALL INLET STATION / OFFSETS LINE UP WITH PROPOSED CURB AND GUTTER.
- ALL STRUCTURES CALLED OUT AS FIELD POURED SHALL BE FIELD POURED. ALL OTHER STRUCTURES (NOT INDICATED AS FIELD POURED) SHALL BE SUBMITTED TO CITY ENGINEERING FOR APPROVAL IF PRECAST STRUCTURES ARE PREFERRED. CONTACT DANIEL OLIVARES OF CITY ENGINEERING AT (608) 261-9285 FOR PRECAST APPROVALS, FAX SHOP DRAWINGS TO (608)264-9275, OR EMAIL SHOP DRAWINGS TO DAOLIVARES@CITYOFMADISON.COM.



MARK	REVISION	DATE	SCALE
12691		2/7/2020 11:37 AM	1 IN=40 FT

12691
 CITY OF MADISON
 CONTRACT NO.: 8490
 U-4

UTILITIES PLAN & PROFILE - ELLEN AVE
 RESURFACING 2020
 M:\DESIGN\Projects\12691\CAD\Storm\12691STM-Pipe Network.dwg

12691
 U-4

STORM SEWER SCHEDULE

RESURFACING W/ STORM	SHEET NO.
PROJECT NO. 12691	U-5
STORM SEWER SCHEDULE	
ELLEN AVE	CITY OF MADISON

U-5

PROPOSED STORM STRUCTURES

STRUC. NO.	STATION	LOCATION (OFFSET)	TYPE	TOP OF CASTING	E.I.	DEPTH	NOTES
ELLEN AVE							
(ELN) S-1	505+51.39	CL	3X3 SAS	918.67	915.53	3.14	W/ R-1550-0054
(ELN) S-2	504+20.95	LT-14.85	H INLET	919.89	919.06	0.83	W/ R-3067-7004-V
(ELN) S-3	503+38.93	LT-8.79	3X3 SAS	923.56	919.06	4.50	W/ R-1550-0054
(ELN) S-4	502+25.03	CL	3X3 SAS	928.03	924.04	3.99	W/ R-1550-0054
(ELN) S-5	500+95.22	LT-6.98	3X3 SAS	934.58	930.58	4.00	W/ R-1550-0054
(ELN) S-6	500+93.22	LT-45.37	H INLET	935.47	932.07	3.40	W/ R-3067-7004-V
(ELN) S-7	500+62.76	LT-46.67	H INLET	936.18	932.78	3.40	W/ R-3067-7004-V
(ELN) S-8	500+24.97	LT-15.23	H INLET	937.61	934.21	3.40	W/ R-3067-7004-V
(ELN) S-9	500+23.54	RT-15.25	H INLET	938.01	934.61	3.40	W/ R-3067-7004-V

PROPOSED STORM PIPES

PIPE NO.	FROM (DNSTM)	TO (UPSTM)	DISCH. E.I.	INLET E.I.	PLAN (PAY) LGTH (FT)	PIPE LGTH (FT)	SLOPE (%)	PIPE SIZE	TYPE	NOTES
ELLEN AVE										
(ELN) P-1	(ELN) S-1	(ELN) S-2	915.53	916.18	131	129	0.50%	15"	RCP	-
(ELN) P-2	(ELN) S-2	(ELN) S-3	916.28	919.06	80	78	3.56%	15"	RCP	-
(ELN) P-3	(ELN) S-3	(ELN) S-4	919.16	924.04	113	110	4.44%	15"	RCP	-
(ELN) P-4	(ELN) S-4	(ELN) S-5	924.14	930.58	129	126	5.11%	15"	RCP	-
(ELN) P-5	(ELN) S-5	(ELN) S-6	930.83	932.07	38	36	3.44%	12"	RCP	-
(ELN) P-6	(ELN) S-6	(ELN) S-7	932.17	932.78	31	28	2.18%	12"	RCP	-
(ELN) P-7	(ELN) S-5	(ELN) S-8	930.83	934.21	70	67	5.04%	12"	RCP	-
(ELN) P-8	(ELN) S-8	(ELN) S-9	934.31	934.61	31	28	1.07%	12"	RCP	-

STORM SEWER ULOs

ULO NO.	STATION	LOCATION (OFFSET)	TYPE	NOTES
ULO10	505+40.84	LT-0.05	GAS	
ULO11	502+03.15	LT-4.01	ELEC	
ULO12	500+94.90	LT-20.81	GAS	
ULO13	500+66.02	LT-46.54	WAT	
ULO14	500+62.67	LT-15.14	WAT	
ULO15	500+53.67	LT-15.13	GAS	
ULO16	500+23.73	RT-9.99	WAT	

NOTE: PLAN LENGTH (PAY LENGTH) IS FROM CENTER OF STRUCTURE TO CENTER OF STRUCTURE. PIPE LENGTH IS ACTUAL LENGTH OF PIPE FROM STRUCTURE WALL TO STRUCTURE WALL. SLOPE CALCULATED USING PIPE LENGTH.

STANDARD NOTES:

- ABBREVIATIONS: AE = APRON ENDWALL; RCP = REINFORCED CONCRETE PIPE; HERCP = HORIZONTAL ELLIPTICAL REINFORCED CONCRETE PIPE; DNA = DOES NOT APPLY; SAS = SEWER ACCESS STRUCTURE; LP = LOW POINT INLET STRUCTURE; FP = FIELD POURED STRUCTURE; TR = TOP OF CONCRETE ROOF; NCM = NO CROWN MATCH FOR PIPES; UD = UNDERDRAIN
- APPROXIMATE DISCHARGE E.I. GIVEN, ADJUST E.I. AND PIPE SLOPE IN THE FIELD.
- TOP OF CASTING GRADE GIVEN IS THE TOP OF CURB FOR INLET STRUCTURES AND THE FLOWLINE OF THE CLOSED CASTING FOR SAS's.
- TOP OF CONCRETE ROOF (TR) IS 1.25' BELOW TOP OF CASTING UNLESS OTHERWISE NOTED.
- ALL REINFORCED CONCRETE PIPES TO BE CLASS III UNLESS OTHERWISE NOTED.
- SURVEYOR TO CONFIRM THAT ALL INLET STATION / OFFSETS LINE UP WITH PROPOSED CURB AND GUTTER.
- ALL STRUCTURES CALLED OUT AS FIELD POURED SHALL BE FIELD POURED. ALL OTHER STRUCTURES (NOT INDICATED AS FIELD POURED) SHALL BE SUBMITTED TO CITY ENGINEERING FOR APPROVAL IF PRECAST STRUCTURES ARE PREFERRED. CONTACT DANIEL OLIVARES OF CITY ENGINEERING AT (608) 261-9285 FOR PRECAST APPROVALS, FAX SHOP DRAWINGS TO (608)264-9275, OR EMAIL SHOP DRAWINGS TO DAOLIVARES@CITYOFMADISON.COM.

SPECIFIC NOTES

STORM SEWER SCHEDULE

RESURFACING W/ STORM	SHEET NO.
PROJECT NO. 12691	U-7
STORM SEWER SCHEDULE	
INDEPENDENCE AVE	CITY OF MADISON

U-7

PROPOSED STORM STRUCTURES

STRUC. NO.	STATION	LOCATION (OFFSET)	TYPE	TOP OF CASTING	E.I.	DEPTH	NOTES
INDEPENDENCE LN							
(IND) T-1	402+72.75	RT-4.70	TAP	-	866.02	-	
(IND) S-1	402+33.83	LT-0.06	6X6 CATCHBASIN	873.28	866.70	6.58	(1)
(IND) S-2	400+03.44	LT-1.85	5X5 SAS	880.61	870.68	9.93	W/ R-1550-0054

REMOVE STORM STRUCTURES

STRUC. NO.	ID NO.	STATION	LOCATION (OFFSET)	TYPE	NOTES
(IND) RS-1	IN 6628-034	402+31.82	LT-0.08	SADDLED INLET	
(IND) RS-2	AS 6628-020	400+03.44	LT-1.85	4X4 SAS	

STORM SEWER ULOs

ULO NO.	STATION	LOCATION (OFFSET)	TYPE	NOTES
ULO20	402+42.29	RT-1.14	GAS	
ULO21	402+28.96	CL	ELEC	
ULO22	400+32.46	LT-1.62	ELEC	
ULO23	400+27.67	LT-1.66	FO	
ULO24	400+20.56	LT-1.79	FO	
ULO25	400+07.49	LT-1.82	TRAFFIC	

PROPOSED STORM PIPES

PIPE NO.	FROM (DNSTM)	TO (UPSTM)	DISCH. E.I.	INLET E.I.	PLAN (PAY) LGTH (FT)	PIPE LGTH (FT)	SLOPE (%)	PIPE SIZE	TYPE	NOTES
INDEPENDENCE LN										
(IND) P-1	(IND) T-1	(IND) S-1	866.02	866.70	39	36	1.89%	48"	RCP	
(IND) P-2	(IND) S-1	(IND) S-2	866.70	870.68	230	225	1.77%	48"	RCP	

REMOVE STORM PIPES

REMOVE NO.	REMOVE FROM	REMOVE TO	LGTH (FT)	PIPE SIZE	PIPE TYPE	PAID (Y/N)	NOTES
(IND) RP-1	(IND) T-1	(IND) RS-1	269	30"	RCP	N	

NOTE: PLAN LENGTH (PAY LENGTH) IS FROM CENTER OF STRUCTURE TO CENTER OF STRUCTURE. PIPE LENGTH IS ACTUAL LENGTH OF PIPE FROM STRUCTURE WALL TO STRUCTURE WALL. SLOPE CALCULATED USING PIPE LENGTH.

STANDARD NOTES:

- ABBREVIATIONS: AE = APRON ENDWALL; RCP = REINFORCED CONCRETE PIPE; HERCP = HORIZONTAL ELLIPTICAL REINFORCED CONCRETE PIPE; DNA = DOES NOT APPLY; SAS = SEWER ACCESS STRUCTURE; LP = LOW POINT INLET STRUCTURE; FP = FIELD POURED STRUCTURE; TR = TOP OF CONCRETE ROOF; NCM = NO CROWN MATCH FOR PIPES; UD = UNDERDRAIN
- APPROXIMATE DISCHARGE E.I. GIVEN, ADJUST E.I. AND PIPE SLOPE IN THE FIELD.
- TOP OF CASTING GRADE GIVEN IS THE TOP OF CURB FOR INLET STRUCTURES AND THE FLOWLINE OF THE CLOSED CASTING FOR SAS's.
- TOP OF CONCRETE ROOF (TR) IS 1.25' BELOW TOP OF CASTING UNLESS OTHERWISE NOTED.
- ALL REINFORCED CONCRETE PIPES TO BE CLASS III UNLESS OTHERWISE NOTED.
- SURVEYOR TO CONFIRM THAT ALL INLET STATION / OFFSETS LINE UP WITH PROPOSED CURB AND GUTTER.
- ALL STRUCTURES CALLED OUT AS FIELD POURED SHALL BE FIELD POURED. ALL OTHER STRUCTURES (NOT INDICATED AS FIELD POURED) SHALL BE SUBMITTED TO CITY ENGINEERING FOR APPROVAL IF PRECAST STRUCTURES ARE PREFERRED. CONTACT DANIEL OLIVARES OF CITY ENGINEERING AT (608) 261-9285 FOR PRECAST APPROVALS, FAX SHOP DRAWINGS TO (608)264-9275, OR EMAIL SHOP DRAWINGS TO DAOLIVARES@CITYOFMADISON.COM.

SPECIFIC NOTES

(1) INVERT GIVEN IS FOR OUTGOING PIPE; ADD 3' SUMP; CONSTRUCT PER S.D.D. 5.7.4, INSTALL R-3067-7004-V & 1550-0054

STORM SEWER SCHEDULE

RESURFACING W/ STORM	SHEET NO.
PROJECT NO. 12691	U-9
STORM SEWER SCHEDULE	
S BROOKS ST	CITY OF MADISON

U-9

PROPOSED STORM STRUCTURES

STRUC. NO.	STATION	LOCATION (OFFSET)	TYPE	TOP OF CASTING	E.I.	DEPTH	NOTES
S BROOKS ST							
(SB) T-1	104+95.13	LT-8.83	TAP	-	845.61	-	(1); TAP EX 11X4 STM BOX
(SB) S-1	104+56.83	LT-7.49	3X3 SAS	851.20	845.63	5.57	W/ R-1550-0054
(SB) S-1A	104+51.58	LT-14.18	H INLET	851.38	847.98	3.40	W/ R-3067-7004-V
(SB) S-1B	104+51.62	RT-16.70	H INLET	851.28	847.88	3.40	W/ R-3067-7004-V
(SB) S-2	103+07.29	LT-7.34	3X3 SAS	851.97	845.80	6.17	W/ R-1550-0054
(SB) S-2A	102+91.25	LT-14.38	H INLET	852.26	848.59	3.67	W/ R-3067-7004-V
(SB) S-2B	102+88.50	RT-16.20	H INLET	852.15	848.75	3.40	W/ R-3067-7004-V
(SB) T-2	102+93.07	LT-19.72	TAP	-	845.90	-	(2); TAP EX AS 4753-030

PROPOSED STORM PIPES

PIPE NO.	FROM (DNSTM)	TO (UPSTM)	DISCH. E.I.	INLET E.I.	PLAN (PAY) LGTH (FT)	PIPE LGTH (FT)	SLOPE (%)	PIPE SIZE	TYPE	NOTES
S BROOKS ST										
(SB) P-1	(SB) T-1	(SB) S-1	845.61	845.63	39	37	0.05%	18"	-	-
(SB) P-1A	(SB) S-1	(SB) S-1A	846.13	847.98	8	5	39.53%	12"	-	-
(SB) P-1B	(SB) S-1	(SB) S-1B	846.13	847.88	25	22	8.08%	12"	-	-
(SB) P-2	(SB) S-1	(SB) S-2	845.73	845.80	149	146	0.05%	18"	-	-
(SB) P-3	(SB) S-2	(SB) T-2	845.90	845.91	19	17	0.06%	18"	-	-
(SB) P-4	(SB) S-2	(SB) S-2A	846.30	848.59	18	15	15.54%	12"	-	-
(SB) P-5	(SB) S-2A	(SB) S-2B	846.69	848.75	31	28	7.44%	12"	-	-

REMOVE STORM STRUCTURES

STRUC. NO.	ID NO.	STATION	LOCATION (OFFSET)	TYPE	NOTES
RS-1	AS 4753-033	104+57.02	LT-18.57	5X7 SAS	
RS-2	IN 4753-035	104+56.46	LT-15.23	INLET	
RS-3	IN 4753-036	104+53.31	RT-17.47	INLET	
RS-4	IN 4753-031	102+93.49	LT-15.15	INLET	
RS-5	IN 4753-032	102+86.98	RT-16.54	INLET	

REMOVE STORM PIPES

REMOVE NO.	REMOVE FROM	REMOVE TO	LGTH (FT)	PIPE SIZE	PIPE TYPE	PAID (Y/N)	NOTES
RP-1	RS-1	RS-3	37	12"	VP	N	
RP-2	T-2	RS-5	37	12"	VP	N	

STORM SEWER ULOs

ULO NO.	STATION	LOCATION (OFFSET)	TYPE	NOTES
ULO30	103+17.14	LT-7.28	TELE	

STORM SEWER ABANDONMENTS

PIPE NO.	FROM (DNSTM)	TO (UPSTM)	LGTH (FT)	PIPE SIZE	TYPE	PAID (Y/N)	NOTES
ABN-1	EX 4X11 BOX	RS-1	25	18"	VP	Y	ABANDON W/ PLUGS
ABN-2	RS-1	T-2	169	18"	VP	Y	ABANDON W/ PLUGS

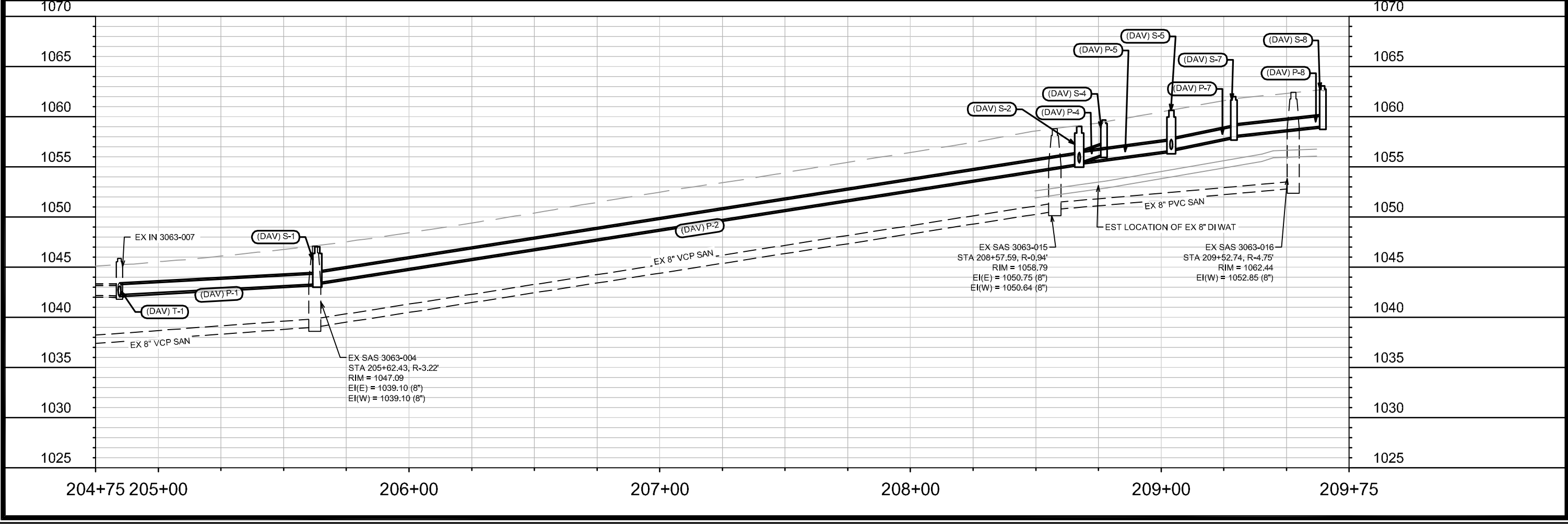
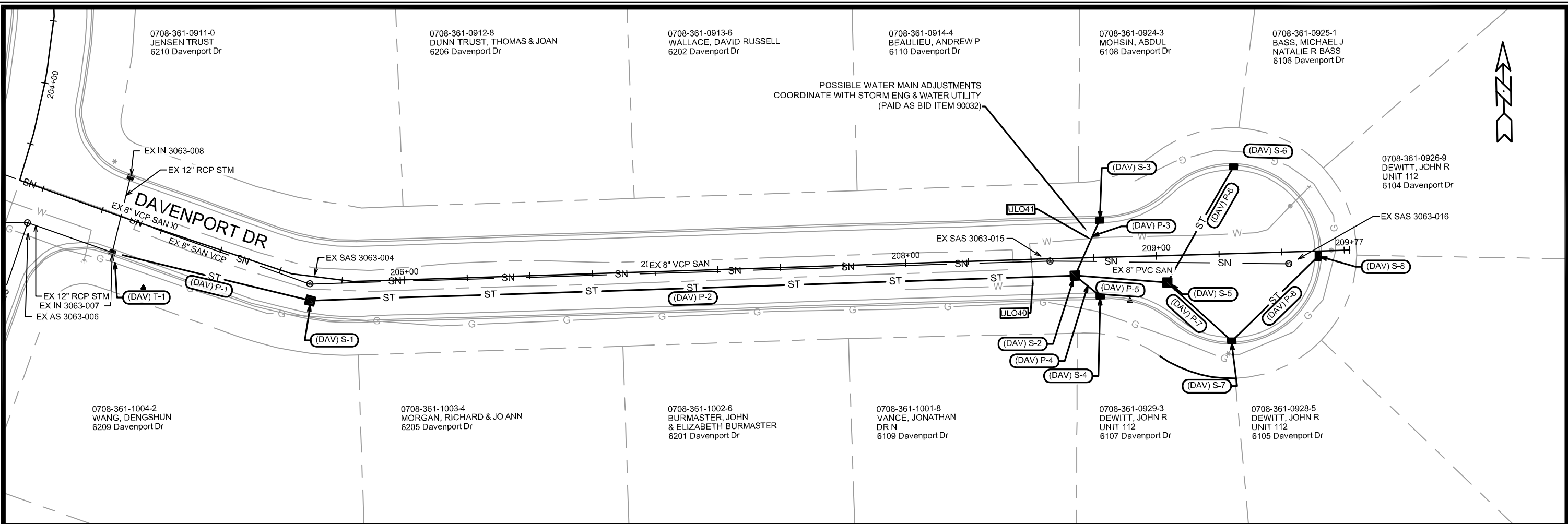
NOTE: PLAN LENGTH (PAY LENGTH) IS FROM CENTER OF STRUCTURE TO CENTER OF STRUCTURE. PIPE LENGTH IS ACTUAL LENGTH OF PIPE FROM STRUCTURE WALL TO STRUCTURE WALL. SLOPE CALCULATED USING PIPE LENGTH.


STANDARD NOTES:

- ABBREVIATIONS: AE = APRON ENDWALL; RCP = REINFORCED CONCRETE PIPE; HERCP = HORIZONTAL ELLIPTICAL REINFORCED CONCRETE PIPE; DNA = DOES NOT APPLY; SAS = SEWER ACCESS STRUCTURE; LP = LOW POINT INLET STRUCTURE; FP = FIELD POURED STRUCTURE; TR = TOP OF CONCRETE ROOF; NCM = NO CROWN MATCH FOR PIPES; UD = UNDERDRAIN
- APPROXIMATE DISCHARGE E.I. GIVEN, ADJUST E.I. AND PIPE SLOPE IN THE FIELD.
- TOP OF CASTING GRADE GIVEN IS THE TOP OF CURB FOR INLET STRUCTURES AND THE FLOWLINE OF THE CLOSED CASTING FOR SAS's.
- TOP OF CONCRETE ROOF (TR) IS 1.25' BELOW TOP OF CASTING UNLESS OTHERWISE NOTED.
- ALL REINFORCED CONCRETE PIPES TO BE CLASS III UNLESS OTHERWISE NOTED.
- SURVEYOR TO CONFIRM THAT ALL INLET STATION / OFFSETS LINE UP WITH PROPOSED CURB AND GUTTER.
- ALL STRUCTURES CALLED OUT AS FIELD POURED SHALL BE FIELD POURED. ALL OTHER STRUCTURES (NOT INDICATED AS FIELD POURED) SHALL BE SUBMITTED TO CITY ENGINEERING FOR APPROVAL IF PRECAST STRUCTURES ARE PREFERRED. CONTACT DANIEL OLIVARES OF CITY ENGINEERING AT (608) 261-9285 FOR PRECAST APPROVALS, FAX SHOP DRAWINGS TO (608)264-9275, OR EMAIL SHOP DRAWINGS TO DAOLIVARES@CITYOFMADISON.COM.

SPECIFIC NOTES

- (1) PROVIDE STORMWATER CONTROL FOR TAP (BID ITEM 90031)
- (2) REBUILD ACCESS STRUCTURE TOP AND REPLACE WITH R-1550-0054 CASTING



DATE	BY	U-10
REVISION		
DESIGNED BY: DAO	DATE: 2/7/2020 11:40 AM	
DRAWN BY: 12691		
12691		
CITY OF MADISON		
CONTRACT NO: 8490		
UTILITIES PLAN & PROFILE - DAVENPORT DR		
RESURFACING 2020		
M:\DESIGN\Projects\12691\CAD\Storm\12691STM-Pipe Network.dwg		
		
12691		
U-10		

ROMFORD RD

0708-361-0312-0
SPINDLER, MICHAEL J
6302 Romford Rd

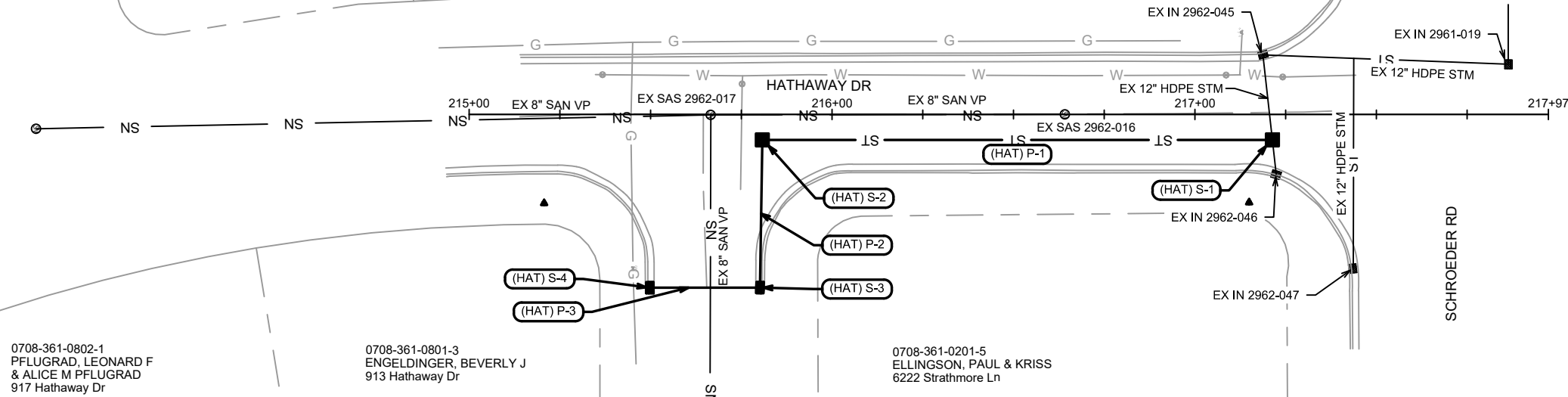
0708-361-0313-8
COPPOOLSE, ANDREW M
910 Hathaway Dr

0708-361-0314-6
JANSSEN, CLEMENS H W
TRIIN JANSSEN
906 Hathaway Dr

0708-361-0315-4
JANSSEN, CLEMENS H W
TRIIN JANSSEN
6301 Schroeder Rd

ST

ST



0708-361-0802-1
PFLUGRAD, LEONARD F
& ALICE M PFLUGRAD
917 Hathaway Dr

0708-361-0801-3
ENGELDINGER, BEVERLY J
913 Hathaway Dr

0708-361-0201-5
ELLINGSON, PAUL & KRISS
6222 Strathmore Ln

SCHROEDER RD

1060

1060

1055

1055

1050

1050

1045

1045

1040

1040

1035

1035

1030

1030

1025

1025

1020

1020

1015

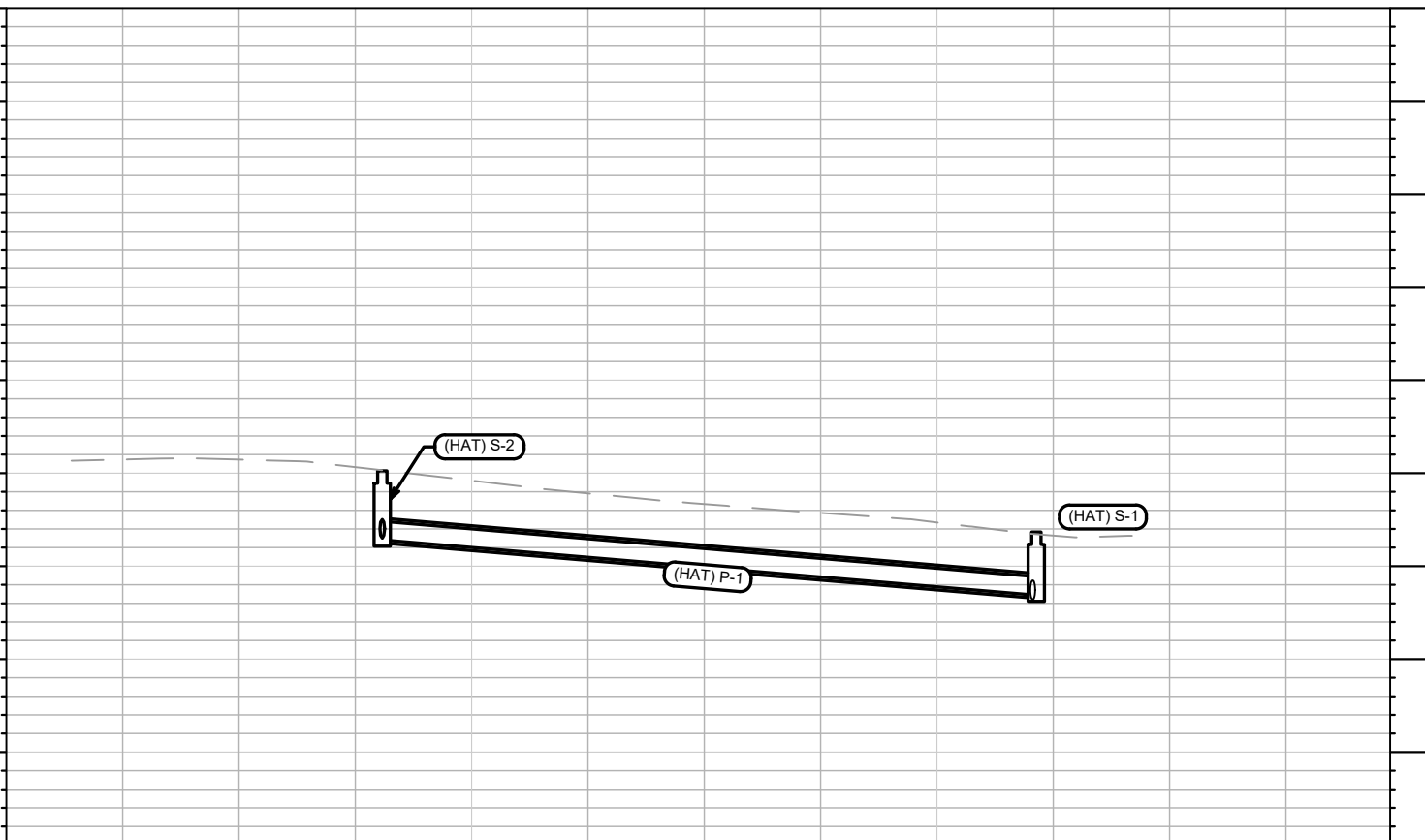
1015

215+00

216+00

217+00

217+97



DATE	BT
REVISION	SCALE: 1 IN=40 FT
MARK	U-11
DESIGNED BY: DAC	DATE: 2/7/2020 11:38 AM
12691	

12691
CITY OF MADISON
CONTRACT NO.: 8490

UTILITIES PLAN & PROFILE - HATHAWAY DR
RESURFACING 2020
M:\DESIGN\Projects\12691\CAD\Storm\12691STM-Pipe Network.dwg



12691
U-11

STORM SEWER SCHEDULE

RESURFACING W/ STORM	SHEET NO.
PROJECT NO. 12691	U-12
STORM SEWER SCHEDULE	
HATHAWAY DR & DAVENPORT DR	CITY OF MADISON

U-12

PROPOSED STORM STRUCTURES

STRUC. NO.	STATION	LOCATION (OFFSET)	TYPE	TOP OF CASTING	E.I.	DEPTH	NOTES
DAVENPORT DR							
(DAV) T-1	204+84.53	RT-14.67	TAP	-	1042.25	-	TAP IN 3063-007
(DAV) S-1	205+63.43	RT-9.72	3X3 SAS	1047.02	1043.32	3.70	W/ R-1550-0054
(DAV) S-2	208+67.34	RT-7.00	3X3 SAS	1059.01	1055.31	3.70	W/ R-3067-7004-V
(DAV) S-3	208+77.76	LT-14.77	H INLET	1059.69	1056.29	3.40	W/ R-3067-7004-V
(DAV) S-4	208+77.24	RT-15.53	H INLET	1059.65	1056.25	3.40	W/ R-3067-7004-V
(DAV) S-5	209+04.05	RT-10.75	3X3 SAS	1060.61	1056.41	4.20	W/ R-1550-0054
(DAV) S-6	209+31.85	LT-34.68	H INLET	1062.14	1058.14	4.00	W/ R-3067-7004-V
(DAV) S-7	209+29.03	RT-34.79	H INLET	1061.98	1057.98	4.00	W/ R-3067-7004-V
(DAV) S-8	209+64.52	RT-2.14	H INLET	1063.07	1059.07	4.00	W/ R-3067-7004-V
HATHAWAY DR							
(HAT) S-1	217+21.35	RT-7.00	3X3 SAS	1031.83	1028.44	3.39	(1); W/ R-1550-0054
(HAT) S-2	215+80.80	RT-7.00	3X3 SAS	1035.12	1031.41	3.71	W/ R-1550-0054
(HAT) S-3	215+80.16	RT-47.70	H INLET	1035.95	1032.36	3.59	W/ R-3067-7004-V
(HAT) S-4	215+49.78	RT-47.72	H INLET	1037.22	1032.66	4.56	W/ R-3067-7004-V

PROPOSED STORM PIPES

PIPE NO.	FROM (DNSTM)	TO (UPSTM)	DISCH. E.I.	INLET E.I.	PLAN (PAY) LGTH (FT)	PIPE LGTH (FT)	SLOPE (%)	PIPE SIZE	TYPE	NOTES
DAVENPORT DR										
(DAV) P-1	(DAV) T-1	(DAV) S-1	1042.25	1043.32	81	80	1.34%	12"	RCP	
(DAV) P-2	(DAV) S-1	(DAV) S-2	1043.42	1055.31	305	302	3.94%	12"	RCP	
(DAV) P-3	(DAV) S-2	(DAV) S-3	1055.41	1056.29	24	21	4.19%	12"	RCP	
(DAV) P-4	(DAV) S-3	(DAV) S-4	1055.41	1056.25	13	10	8.40%	12"	RCP	
(DAV) P-5	(DAV) S-2	(DAV) S-5	1055.41	1056.41	37	34	2.94%	12"	RCP	
(DAV) P-6	(DAV) S-5	(DAV) S-6	1056.71	1058.14	53	50	2.86%	12"	RCP	
(DAV) P-7	(DAV) S-5	(DAV) S-7	1056.71	1057.98	35	31	4.10%	12"	RCP	
(DAV) P-8	(DAV) S-7	(DAV) S-8	1058.08	1059.07	48	45	2.20%	12"	RCP	
HATHAWAY DR										
(HAT) P-1	(HAT) S-1	(HAT) S-2	1028.44	1031.41	141	138	2.15%	12"	RCP	-
(HAT) P-2	(HAT) S-2	(HAT) S-3	1031.51	1032.36	41	38	2.24%	12"	RCP	-
(HAT) P-3	(HAT) S-3	(HAT) S-4	1032.46	1032.66	30	27	0.74%	12"	RCP	

STORM SEWER ULOs

ULO NO.	STATION	LOCATION (OFFSET)	TYPE	NOTES
ULO40	208+50.49	RT-7.51	WATER	
ULO41	208+47.17	LT-7.26	WATER	

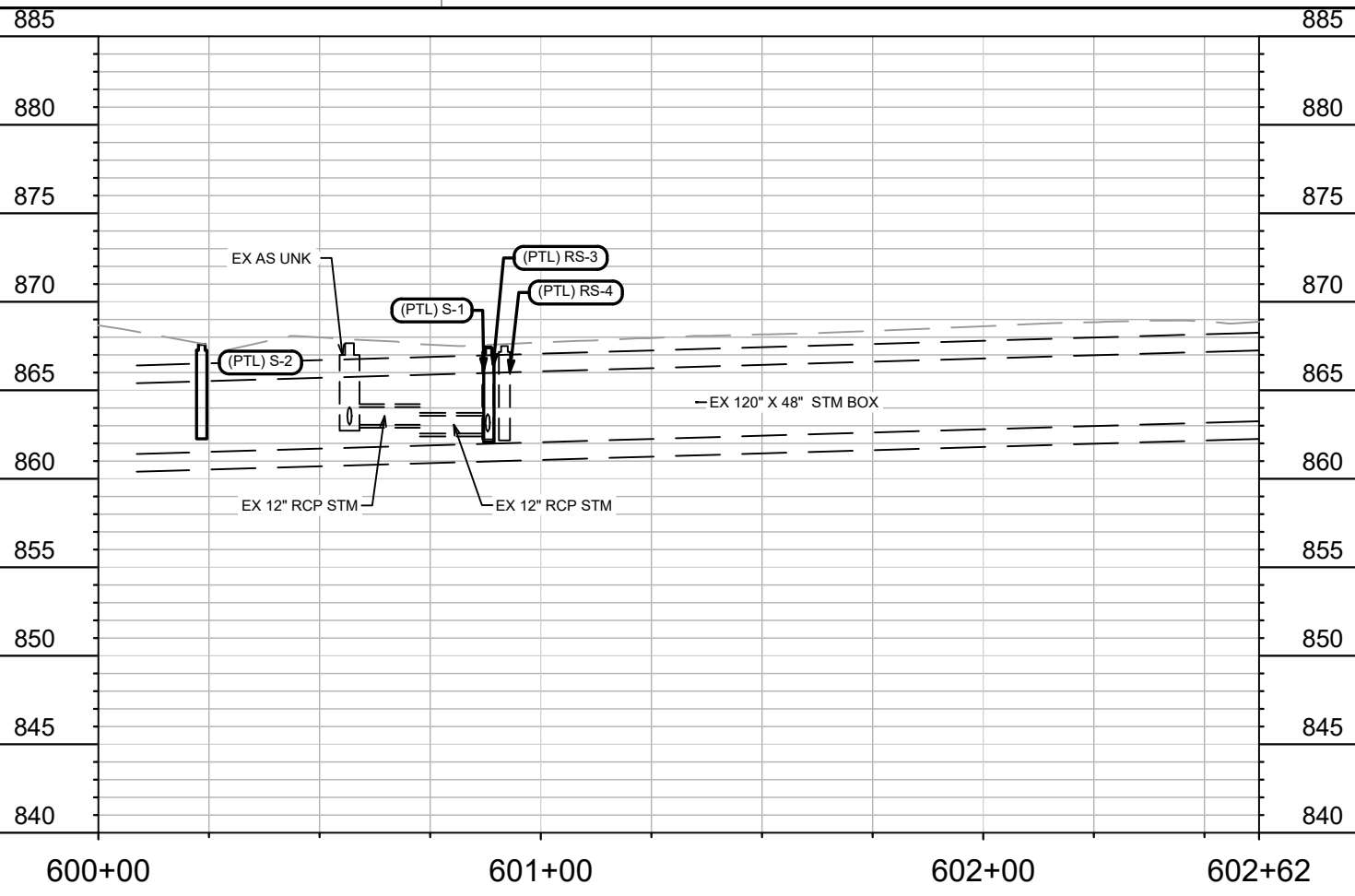
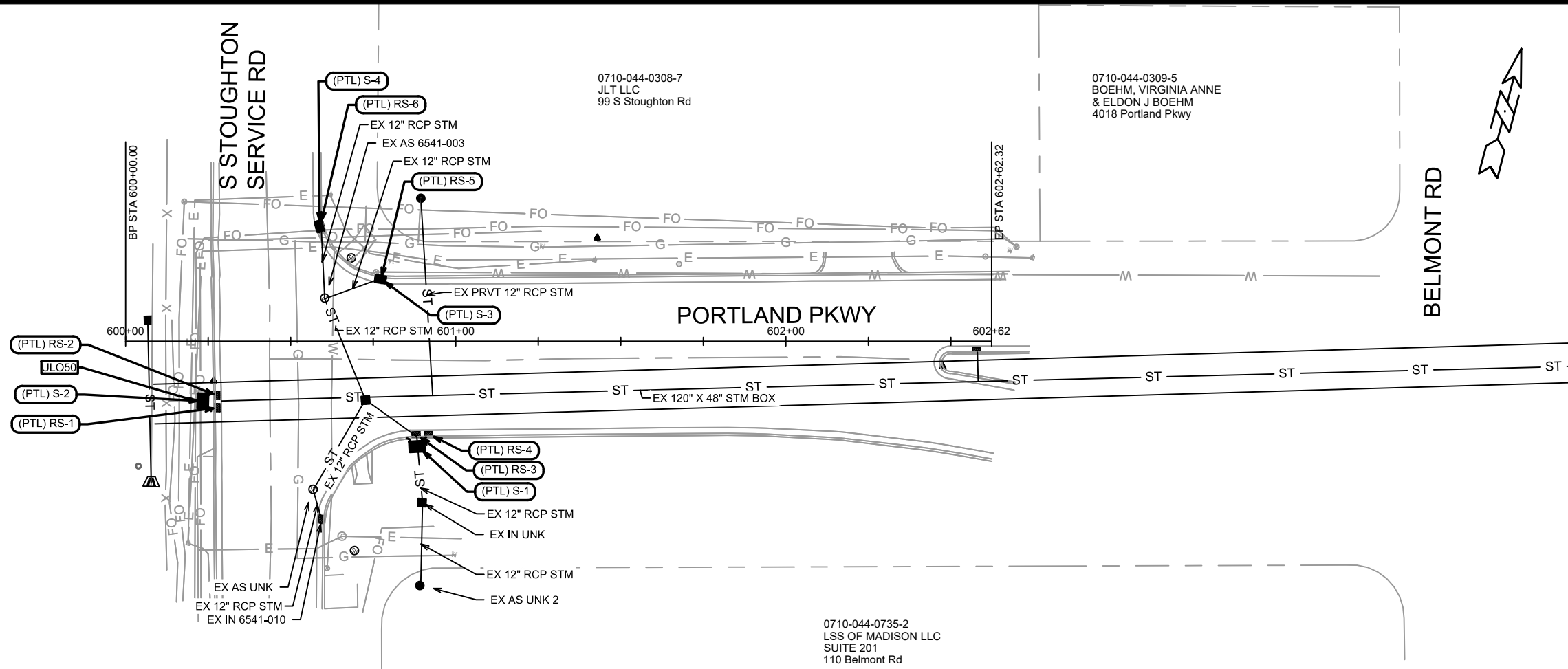
SPECIFIC NOTES

(1) DOGHOUSE STRUCTURE IS ALLOWED

NOTE: PLAN LENGTH (PAY LENGTH) IS FROM CENTER OF STRUCTURE TO CENTER OF STRUCTURE. PIPE LENGTH IS ACTUAL LENGTH OF PIPE FROM STRUCTURE WALL TO STRUCTURE WALL. SLOPE CALCULATED USING PIPE LENGTH.

STANDARD NOTES:

- ABBREVIATIONS: AE = APRON ENDWALL; RCP = REINFORCED CONCRETE PIPE; HERCP = HORIZONTAL ELLIPTICAL REINFORCED CONCRETE PIPE; DNA = DOES NOT APPLY; SAS = SEWER ACCESS STRUCTURE; LP = LOW POINT INLET STRUCTURE; FP = FIELD POURED STRUCTURE; TR = TOP OF CONCRETE ROOF; NCM = NO CROWN MATCH FOR PIPES; UD = UNDERDRAIN
- APPROXIMATE DISCHARGE E.I. GIVEN, ADJUST E.I. AND PIPE SLOPE IN THE FIELD.
- TOP OF CASTING GRADE GIVEN IS THE TOP OF CURB FOR INLET STRUCTURES AND THE FLOWLINE OF THE CLOSED CASTING FOR SAS's.
- TOP OF CONCRETE ROOF (TR) IS 1.25' BELOW TOP OF CASTING UNLESS OTHERWISE NOTED.
- ALL REINFORCED CONCRETE PIPES TO BE CLASS III UNLESS OTHERWISE NOTED.
- SURVEYOR TO CONFIRM THAT ALL INLET STATION / OFFSETS LINE UP WITH PROPOSED CURB AND GUTTER.
- ALL STRUCTURES CALLED OUT AS FIELD POURED SHALL BE FIELD POURED. ALL OTHER STRUCTURES (NOT INDICATED AS FIELD POURED) SHALL BE SUBMITTED TO CITY ENGINEERING FOR APPROVAL IF PRECAST STRUCTURES ARE PREFERRED. CONTACT DANIEL OLIVARES OF CITY ENGINEERING AT (608) 261-9285 FOR PRECAST APPROVALS, FAX SHOP DRAWINGS TO (608)264-9275, OR EMAIL SHOP DRAWINGS TO DAOLIVARES@CITYOFMADISON.COM.



0710-044-0308-7
JLT LLC
99 S Stoughton Rd

0710-044-0309-5
BOEHM, VIRGINIA ANNE
& ELDON J BOEHM
4018 Portland Pkwy

0710-044-0735-2
LSS OF MADISON LLC
SUITE 201
110 Belmont Rd

MARK	REVISION	DATE	BT
12691			U-13
UTILITIES PLAN & PROFILE - PORTLAND PKWY RESURFACING 2020 CITY OF MADISON CONTRACT NO: 8490 Scale: 1 IN=40 FT M:\DESIGN\Projects\12691\CAD\Storm\12691STM-Pipe Network.dwg			
		12691	U-13

STORM SEWER SCHEDULE

RESURFACING W/ STORM	SHEET NO.	U-14
PROJECT NO. 12691	U-14	
STORM SEWER SCHEDULE		
PORTLAND PKWY	CITY OF MADISON	

PROPOSED STORM STRUCTURES

STRUC. NO.	STATION	LOCATION (OFFSET)	TYPE	TOP OF CASTING	E.I.	DEPTH	NOTES
PORTLAND PKWY							
(PTL) S-1	600+88.25	RT-31.89	TERRACE INLET TYPE 3	867.40	862.56	4.84	(1)
(PTL) S-2	600+23.37	RT-18.12	TERRACE INLET TYPE 3	867.59	862.56	5.03	(1); SADDLED ON STM BOX
(PTL) S-3	600+77.17	LT-18.84	H INLET	867.52	863.12	4.40	W/ R-3067-7004-VB
(PTL) S-4	600+58.68	LT-34.91	H INLET	867.40	863.12	4.28	W/ R-3067-7004-V

REMOVE STORM STRUCTURES

STRUC. NO.	ID NO.	STATION	LOCATION (OFFSET)	TYPE	NOTES
(PTL) RS-1		600+27.86	RT-20.12	INLET	
(PTL) RS-2		600+27.90	RT-16.45	INLET	
(PTL) RS-3		600+87.90	RT-28.12	INLET	
(PTL) RS-4		600+92.22	RT-28.23	INLET	
(PTL) RS-5		600+77.14	LT-18.65	INLET	
(PTL) RS-6		600+58.51	LT-34.91	INLET	

STORM SEWER ULOs

ULO NO.	STATION	LOCATION (OFFSET)	TYPE	NOTES
ULO50	600+21.44	RT-18.06	FO/ELEC	

SPECIFIC NOTES

(1) TOP OF CASTING IS SET 0.2' BELOW TOP OF CURB AT SITE LOCATION

NOTE: PLAN LENGTH (PAY LENGTH) IS FROM CENTER OF STRUCTURE TO CENTER OF STRUCTURE. PIPE LENGTH IS ACTUAL LENGTH OF PIPE FROM STRUCTURE WALL TO STRUCTURE WALL. SLOPE CALCULATED USING PIPE LENGTH.

STANDARD NOTES:

- ABBREVIATIONS: AE = APRON ENDWALL; RCP = REINFORCED CONCRETE PIPE; HERCP = HORIZONTAL ELLIPTICAL REINFORCED CONCRETE PIPE; DNA = DOES NOT APPLY; SAS = SEWER ACCESS STRUCTURE; LP = LOW POINT INLET STRUCTURE; FP = FIELD POURED STRUCTURE; TR = TOP OF CONCRETE ROOF; NCM = NO CROWN MATCH FOR PIPES; UD = UNDERDRAIN
- APPROXIMATE DISCHARGE E.I. GIVEN, ADJUST E.I. AND PIPE SLOPE IN THE FIELD.
- TOP OF CASTING GRADE GIVEN IS THE TOP OF CURB FOR INLET STRUCTURES AND THE FLOWLINE OF THE CLOSED CASTING FOR SAS's.
- TOP OF CONCRETE ROOF (TR) IS 1.25' BELOW TOP OF CASTING UNLESS OTHERWISE NOTED.
- ALL REINFORCED CONCRETE PIPES TO BE CLASS III UNLESS OTHERWISE NOTED.
- SURVEYOR TO CONFIRM THAT ALL INLET STATION / OFFSETS LINE UP WITH PROPOSED CURB AND GUTTER.
- ALL STRUCTURES CALLED OUT AS FIELD POURED SHALL BE FIELD POURED. ALL OTHER STRUCTURES (NOT INDICATED AS FIELD POURED) SHALL BE SUBMITTED TO CITY ENGINEERING FOR APPROVAL IF PRECAST STRUCTURES ARE PREFERRED. CONTACT DANIEL OLIVARES OF CITY ENGINEERING AT (608) 261-9285 FOR PRECAST APPROVALS, FAX SHOP DRAWINGS TO (608)264-9275, OR EMAIL SHOP DRAWINGS TO DAOLIVARES@CITYOFMADISON.COM.